

# 2025

## Annual Security and Fire Safety Report



Issued: September 30, 2025

*Containing Information  
for the 2025-2026  
Academic Year*

# Table of Contents

---

<b>District Campus Addresses and Map .....</b>	<b>5</b>	Act (VAWA) Offenses .....	17
<b>2025 Annual Security and Fire Safety Report.6</b>		Rules for Counting Hate Crimes .....	17
Equal Opportunity Statement.....	6	1.4 Collection and Reporting Procedures.	17
Board Policies .....	6	1.5 Campus Maps of Clery Geography....	18
<b>Collin College’s Mission.....</b>	<b>7</b>	1.6 Crime Statistics Tables for Calendar Years	
Our Mission .....	7	2022-2024.....	18
Our Vision .....	7	<b>Section 2: Reporting Policies and Procedures</b>	<b>19</b>
Core Values.....	7	.....	
Purpose Statement.....	7	2.1 Reporting Criminal Actions and Other	
<b>Destination 2030 .....</b>	<b>8</b>	Emergencies .....	19
<b>Section 1: Crime Statistics .....</b>	<b>9</b>	2.2 Campus Security Authorities (CSAs)..	19
Policy for Preparing and Publishing the Annual		2.3 Pastoral and Professional Counselors .20	
Security and Fire Safety Report (ASFSR) and		2.4 Employee Mandatory Reporting Under	
Disclosure of Crime Statistics.....	9	State Law for Incidents of Dating Violence,	
Campus Addresses.....	10	Sexual Assault, Sexual Harassment, and	
1.1 Definitions of Clery Act Geography... 10		Stalking.....	21
1.2 Definitions of Clery Act Crimes .....	11	Peace Officer .....	22
Arrests and Referrals for Disciplinary		Exceptions .....	22
Action .....	13	Mandatory Reporting Form.....	22
Violations Against Women Act (VAWA)		2.5 Timely Warning Policy .....	22
Offenses .....	13	2.6 Annual Disclosure of Crime Statistics.	22
Hate Crimes .....	14	2.7 Voluntary Confidential Reporting .....	22
1.3 Counting and Disclosing Crime Statistics		<b>Section 3: Campus Security Policies .....</b>	<b>23</b>
.....	15	3.1 Security and Access to Campus Facilities	
Hierarchy Rule .....	16	.....	23
Exceptions to the Hierarchy Rule.....	16	Academic and Administrative Buildings	
Rules for Counting Arson .....	16	.....	23
Rules for Counting Sexual Assaults .....	16	Academic and Administrative Building	
Rules for Counting Arrests and Referrals for		Hours.....	23
Disciplinary Action.....	16	Residential Buildings.....	23
Rules for Counting Violence Against Women		Changes to Normal Building Hours ....	24
		3.2 Security Considerations in Maintenance	

# Table of Contents

---

.....	24	<b>Section 5: Campus Security and Crime Prevention Programs.....</b>	<b>35</b>
Facilities and Landscaping Maintenance .....	24	5.1 Vehicle Use and Operation .....	35
Reporting Safety, Security, and Maintenance Concerns .....	25	5.2 Weapons on Campus .....	35
3.3 Daily Crime Log .....	25	Respect for the Right to Bear Arms ...	35
<b>Section 4: Law Enforcement Policies .....</b>	<b>26</b>	Constitutional Carry and Peace Officers .....	35
4.1 Law Enforcement Authority and Jurisdiction .....	26	School Marshal Program .....	35
Citations .....	26	License to Carry (LTC) Holders .....	36
Criminal Trespass Warning Notice .....	27	Legal Limitations and Prohibited Carry .....	36
Court Orders of Protections .....	27	LTC Procedures .....	36
Searches .....	27	LTC On-Campus Student Housing .....	38
Reasonable Suspicion Searches .....	27	Non-Residents .....	38
4.2 Working Relationship with Local, State, and Federal Law Enforcement .....	28	Responsibility for Personal Injury or Damage .....	38
4.3 Crime Reporting Encouragement and Disclosure .....	29	Requirements for Proper Storage .....	39
Reporting a Non-Emergency Complaint or Concern .....	30	Exclusion Zones .....	39
Voluntary Confidential Reporting .....	31	Other Weapons and Devices Prohibited .....	40
Anonymous Reports of Dating Violence, Sexual Assault, Sexual Harassment, and Stalking .....	31	Violations .....	40
Reporting to a Local Law Enforcement Agency .....	32	Reporting .....	40
Contact Information for Local Law Enforcement Agencies .....	32	Safety Committee .....	40
Disclosure of Results of Disciplinary Proceeding to the Alleged Victim of a Crime of Violence or Non-Forcible Sex Offense .....	33	5.3 Security Awareness and Crime Prevention Programs .....	41
		5.4 Examples of Programs .....	41
		<b>Section 6: Crime Prevention Education.....</b>	<b>42</b>
		6.1 Crime Prevention, Safety, and Security Awareness Programs .....	42
		6.2 Alcohol and Substance Abuse Prevention and Intervention Programs .....	42
		6.3 Programs to Promote Awareness and	



# Table of Contents

---

Prevention of Dating Violence, Domestic Violence, Sexual Assault, and Stalking ....	42	Appliances .....	50
Prevention and Awareness Programs .....	43	Candles and Open Flames.....	50
<b>Section 7: Policies Regarding Dating Violence, Domestic Violence, Sexual Assault, and Stalking .....</b>	<b>44</b>	Fire Drills.....	50
<b>Section 8: Emergency Response and Evacuation Procedures .....</b>	<b>45</b>	Fireworks.....	50
Emergency Management at Collin College		Grills and Outdoor Cooking Appliances ..	50
Evacuation and Relocation .....	45	Health, Safety, and Preventative Maintenance .....	50
Emergency Management Drills, Exercises, and Trainings .....	45	Keys and Locks.....	51
Emergency Notification Procedures .....	45	Lockouts .....	51
Determining the Content and Recipients of Notifications .....	45	Maintenance.....	51
Procedures for Community and External Notification.....	45	Maintenance Emergencies .....	52
<b>Section 9: Missing Person Notification Policy and Procedures .....</b>	<b>46</b>	Patios and Balconies .....	52
<b>Section 10: Monitoring and Recording Criminal Activity at Non-Campus Locations.....</b>	<b>47</b>	Reporting a Crime or Emergency to the Collin College Police Department .....	52
<b>Section 11: Alcohol Policy and Enforcement .....</b>	<b>47</b>	Reporting a Violation of Student Housing Policies and Procedures.....	53
<b>Section 12: Drug Policy and Enforcement..</b>	<b>48</b>	Roofs and Ledges.....	53
<b>Section 13: Sex Offender Registry Information .....</b>	<b>48</b>	Safety .....	53
<b>Section 14: Annual Fire Safety Report for Collin College Student Housing on the Plano Campus Policy for Publishing the Annual Fire Safety Report.....</b>	<b>49</b>	Security Phone Numbers and Websites..	54
Definitions .....	49	Smoke Detectors .....	54
Collin College Student Housing .....	49	Structural Changes.....	54
Collin College Student Housing Policies ..	49	Fire Safety Systems.....	54
		Policies Regarding Fire Safety Education and Training Programs.....	54
		Procedures for Reporting a Fire.....	55
		Procedures for Evacuation in Case of a Fire .....	55
		<b>Appendix A: Campus Maps Showing Clery Act Geography Boundaries .....</b>	<b>57</b>
		<b>Appendix B: Campus Crime Statistics .....</b>	<b>60</b>
		<b>Appendix C: Fire Statistics.....</b>	<b>71</b>

# District Campus Addresses and Map

*All of the policy statements and procedures listed in the 2025 Annual Security and Fire Safety Report (ASFSR) apply universally to all Collin College campuses, centers, and locations, unless noted otherwise.*

## **Celina Campus**

2505 Kinship Parkway  
Celina, Texas 75009  
469.905.3590

## **Collin Higher Education Center**

3452 Spur 399  
McKinney, Texas 75069  
972.599.3100

## **Courtyard Center**

4800 Preston Park Blvd.  
Plano, Texas 75093  
972.985.3790

## **Farmersville Campus**

501 S. Collin Parkway  
Farmersville, Texas 75442  
972.549.6490

## **Frisco Campus**

9700 Wade Blvd.  
Frisco, Texas 75035  
972.377.1790

## **iCollin Virtual Campus Administrative Offices**

3452 Spur 399  
McKinney, Texas 75069  
972.549.6416

## **McKinney Campus**

2200 W. University Drive  
McKinney, Texas 75071  
972.548.6790

## **Plano Campus**

2800 E. Spring Creek Parkway  
Plano, Texas 75074  
972.881.5790

## **Public Safety Training Center**

3600 Redbud Blvd.  
McKinney, Texas 75069  
972.548.6790  
Fire Science: 972.548.6836  
Law Enforcement Academy:  
972.548.6561

## **Rockwall Center**

Dr. Gene Burton College  
and Career Academy  
2301 S. John King Blvd.  
Rockwall, Texas 75032

## **Technical Campus**

2550 Bending Branch Way  
Allen, Texas 75013  
972.553.1290

## **Wylie Campus**

391 Country Club Road  
Wylie, Texas 75098  
972.378.8790.

## **Internet Address**

[www.collin.edu](http://www.collin.edu)



# 2025 Annual Security and Fire Safety Report

---

*Collin County Community College District (Collin College) is a multi-campus institution with various campuses, centers, and locations spread throughout Collin County and Rockwall County, Texas. All of the Board policy statements and procedures listed in the 2025 Annual Security and Fire Safety Report (ASFSR) apply universally to all Collin College campuses, centers, and locations, unless noted otherwise.*

*The ASFSR is for information only and is not intended as a contract, expressed or implied. The programs, policies, and statements contained herein are subject to continual review and evaluation. Collin College reserves the right to make changes or deletions to the regulations,*

*guidelines, and information contained in this publication at any time. If such changes are made, notification to the Collin College community will be provided pursuant to [Clery Act](#) requirements.*

*Upon request, the ASFSR is available in an alternate format. For more information, contact Collin College's Accommodations at Collin College for Equal Support Services ACCESS Office at 972.881.5898 (voice) or [access@collin.edu](mailto:access@collin.edu), or HR at 972.985.3783 (voice) or [hr@collin.edu](mailto:hr@collin.edu). For persons who are Deaf or hard of hearing or have speech impairments, contact Texas Relay Services by dialing 711, 800.735.2989 (TTY) or 877.826.1789 (VCO).*

---

## Equal Opportunity Statement

Collin College is an equal opportunity institution and provides educational and employment opportunities without discrimination on any basis protected by applicable law. Students who have a concern(s) regarding discrimination, harassment, retaliation, sex discrimination, sexual assault, and/or sexual harassment in violation of applicable laws should contact the District Dean of Students Office at 972.881.5604 or [dos@collin.edu](mailto:dos@collin.edu). Faculty and staff who have a concern(s) regarding discrimination, harassment, retaliation, sex discrimination, sexual assault, and/or sexual harassment in violation of applicable laws should contact the Human Resources Department at 972.758.3856 or [hr@collin.edu](mailto:hr@collin.edu).

Collin College provides reasonable accommodations to afford equal educational opportunities to all people, in accordance with the [Americans with Disabilities Act of 1990 \(ADA\)](#), [Americans](#)

[with Disabilities Act and Amendments Act of 2008 \(ADAAA\)](#), and Section 504 of the [Rehabilitation Act of 1973](#). Students requesting accommodations under these provisions should contact Collin College's Accommodations at Collin College for Equal Support Services (ACCESS) Office at 972.881.5898 (voice) or [access@collin.edu](mailto:access@collin.edu). Faculty and staff requesting accommodations under these provisions should contact HR at 972.985.3783 (voice) or [hr@collin.edu](mailto:hr@collin.edu).

## Board Policies

Collin College's Board Policy Manual also contains information that is applicable to Collin College students, faculty, staff, and community members, and can be found online at [pol.tasb.org/PolicyOnline?key=304](http://pol.tasb.org/PolicyOnline?key=304).



## Our Mission

Collin College is a student- and community-centered institution committed to developing valuable skills, strengthening character, and challenging the intellect.

## Our Vision

Delivering a brighter future for our students and communities.

## Core Values

We have a passion for:

- Learning
- Service and Involvement
- Creativity and Innovation
- Academic Excellence
- Dignity and Respect
- Integrity

## Purpose Statement

Through its campuses, centers, and programs, Collin College fulfills community and industry needs and its primary statutory purpose under [Section 130.003\(e\)](#) of the [Texas Education Code](#) by providing:

- Academic courses in the core curriculum or a field of study curriculum to transfer to higher education institutions;
- Programs leading to baccalaureate degrees, associate degrees, or certificates, including technical programs, designed to develop marketable skills and promote economic development.
- Continuing adult education programs for academic, professional, occupational, and cultural enhancement.
- Developmental education and literacy programs designed to improve the basic skills of students.
- A program of student support services, including counseling and learning resources, designed to assist individuals in achieving their educational and career goals.
- Workforce, economic, and community development initiatives designed to meet local and state needs; and
- Other purposes as may be directed by the Board and/or the laws of the State of Texas.



# DESTINATION 2030



Master Plan	Strategic Goals
1. Ensure maximum utilization of college facilities, programs, and resources.	1. Realign student completion and performance metrics to meet or exceed state and regional accreditation thresholds and goals.
2. Expand college programs and facilities to accommodate growth and employment needs throughout the service area.	2. Develop and implement strategies to become a national exemplar in program and student outcomes.
3. Enhance the college's university partnerships through the development of comprehensive pathways that enrich the student experience and support student completion with a focus on Collin College students.	3. Create and implement comprehensive pathways to enrich the student experience and support student completions.
4. Implement planned and new components of the college's comprehensive safety and emergency management plan.	4. Implement strategies to be recognized as an employer of choice to attract and retain top talent.
5. Streamline the college's programs and systems by implementing efficient business processes that improve outcomes for students and employees.	5. Expand educational access through a systemic approach with external partners and stakeholders.
	6. Expand baccalaureate degree options.



# Section 1: Crime Statistics

---

## Policy for Preparing and Publishing the Annual Security and Fire Safety Report (ASFSR) and Disclosure of Crime Statistics

Safety and security are concerns for all members of the Collin College community, including students, employees, and visitors. The Collin College Police Department prepares this Annual Security and Fire Safety Report (ASFSR) every year in order to comply with the Board Policy GCC(Legal) and the Jeanne Clery Disclosure of Campus Security Policy and Campus Crime Statistics Act, 20 U.S.C. § 1092(f) ([Clery Act](#)).

This Annual Security and Fire Safety Report (ASFSR) is prepared by the Collin College Police Department in cooperation with the local law enforcement agencies surrounding Collin College's main campuses, centers, and alternative sites; the District Dean of Students Office; Collin College Student Housing and Resident Life staff; the Human Resources Department; and the Office of Emergency Management. Each entity provides updated information on their educational efforts and programs to comply with the Clery Act annually.

Notification is made through email to all enrolled Collin College students (including those attending less than full time and those not enrolled in Title IV programs or courses) annually prior to October 1, which provides information on the Clery Act, a brief description of the current Annual Security and Fire Safety Report (ASFSR), and the direct website link to access this document. Collin College faculty and staff members receive an identical email notification annually prior to October 1. Additionally, information on the Collin College Police Department's general orders and procedures and

a link to the current Annual Security and Fire Safety Report (ASFSR) are published annually in the current Collin College Student Handbook available at [www.collin.edu/studentresources/deanofstudents/studenthandbook](http://www.collin.edu/studentresources/deanofstudents/studenthandbook).

Prospective students are provided with information on the [Clery Act](#), a brief description of the current Annual Security and Fire Safety Report (ASFSR), and the direct website link to access this document during the admissions process and mandatory New Student Orientation sessions. A link to Collin College's current Annual Security and Fire Safety Report (ASFSR) is also located on the college's "Admissions & Aid" website located at [www.collin.edu/admissions/](http://www.collin.edu/admissions/).

Prospective employees are provided with information on the Clery Act, a brief description of the current Annual Security and Fire Safety Report (ASFSR), and the direct website link to access this document during the hiring process. A link to Collin College's current Annual Security and Fire Safety Report (ASFSR) is also located on the Human Resources Department's "Employment at Collin College" website located at [www.collin.edu/hr/employment](http://www.collin.edu/hr/employment).

Copies of this Annual Security and Fire Safety Report (ASFSR) may be obtained on Collin College's "Annual Security and Fire Safety Reports" website located at [www.collin.edu/studentresources/deanofstudents/annualsecurityreports](http://www.collin.edu/studentresources/deanofstudents/annualsecurityreports) and in print at the following locations:

# Section 1: Crime Statistics

**Celina Campus**

2505 Kinship Parkway  
Celina, Texas 75009  
469.905.3590

**Collin Higher Education Center**

3452 Spur 399  
McKinney, Texas 75069  
972.599.3100

**Courtyard Center**

4800 Preston Park Blvd.  
Plano, Texas 75093  
972.985.3790

**Farmersville Campus**

501 S. Collin Parkway  
Farmersville, Texas 75442  
972.549.6490

**Frisco Campus**

9700 Wade Blvd.  
Frisco, Texas 75035  
972.377.1790

**McKinney Campus**

2200 W. University Drive  
McKinney, Texas 75071  
972.548.6790

**Plano Campus**

2800 E. Spring Creek Parkway  
Plano, Texas 75074  
972.881.5790

**Public Safety Training Center**

3600 Redbud Blvd.  
McKinney, Texas 75069  
972.548.6790

Fire Science: 972.548.6836  
Law Enforcement Academy:  
972.548.6561

**Technical Campus**

2550 Bending Branch Way  
Allen, Texas 75013  
972.553.1290

**Wylie Campus**

391 Country Club Road  
Wylie, Texas 75098  
972.378.8790.

## 1.1 Definitions of Clery Act Geography

The [Clery Act](#) requires institutions to disclose crime statistics for four types of geographic locations:

- **Campus:**

- » Any building or property owned or controlled by an institution within the same reasonably contiguous geographic area and used by the institution in direct support of, or in a manner related to, the institution's educational purposes, including residence halls.
- » Any building or property that is within or reasonably contiguous to the area identified in the paragraph above, that is owned by the institution but controlled by another person, is frequently used by students, and supports institutional purposes (such as a food or other retail vendor).

- **Non-campus Building or Property:**

- » Any building or property owned or controlled by a student organization that is officially recognized by the institution.
- » Any building or property owned or controlled by an institution that is used in direct support of, or in relation to, the institution's educational purposes, is frequently used by students, and is not within the same reasonably contiguous geographic area of the institution.

- **Public Property:** All public property that is within the same reasonably contiguous geographic area of the institution, such as a sidewalk, a street, other thoroughfare; or parking facility, and is adjacent to a facility owned or controlled by the institution if the facility is used by the institution in direct support of, or in a manner related to, the

# Section 1: Crime Statistics

---

institution's educational purposes. Public property encompasses all public property, including thoroughfares, streets, sidewalks; and parking facilities, that is within the campus or immediately adjacent to and accessible from the campus.

- **Residential Facilities:** Any student housing facility that is owned or controlled by the institution or is located on property that is owned or controlled by the institution, and is within the reasonably contiguous geographic area that makes up the campus is considered an on-campus student housing facility.

Collin College periodically reviews the geography for each campus to ensure compliance with the Clery Act. Maps showing the Clery Act geography boundaries for each Collin College campus are located in [Appendix A](#).

## 1.2 Definitions of Clery Act Crimes

The [Clery Act](#) requires Collin College to use the definitions provided by the Federal Bureau of Investigation's (FBI's) [Uniform Crime Reporting \(UCR\)](#) Program when counting and disclosing statistics in the Criminal Offenses, Arrests and Referrals for Disciplinary Action; and Hate Crimes categories. When counting and disclosing statistics in the Violence Against Women Act (VAWA) Offenses category, the Clery Act requires Collin College to use the definitions 2024 Annual Security and Fire Safety Report (ASFSR) 12 provided by the Violence Against Women Act. The definitions for each Clery Act crime are listed alphabetically under the appropriate category below.

- **Aggravated Assault:** An unlawful attack by one (1) person upon another for the purpose of inflicting severe or aggravated bodily injury. This type of assault usually is accompanied by the use of a weapon or by means likely to produce death or great bodily harm. This includes assaults or attempts to kill or murder, poisoning (including the use of date rape drugs), assault with a dangerous or deadly weapon, maiming, mayhem, assault with explosives; and assault with disease (i.e., offender is aware they are infected with a deadly disease and deliberately attempts to inflict the disease by biting, spitting, etc.).
- **Arson:** Any willful or malicious burning or attempt to burn, with or without intent to defraud, a dwelling house, public building, motor vehicle or aircraft, personal property of another, etc. Note: The Clery Act definition does not require that any findings be made by a fire official before classifying an incident as arson. All Collin College Police Department officers have the authority to determine whether an incident should be classified as arson for purposes of Clery Act reporting.
- **Burglary:** The unlawful entry of a structure to commit a felony or a theft, including forcible entry; unlawful entry-no force; attempted forcible entry; unlawful entry with intent to commit a larceny or felony; breaking and entering with intent to commit a larceny; housebreaking; safecracking; and all attempts at these offenses. The following three (3) conditions must be met to classify a crime as burglary: a. There must be evidence of unlawful entry (i.e., trespass). This



## Section 1: Crime Statistics

---

means the person did not have the right to be in the structure at the time the incident occurred; b. The unlawful entry must occur within a structure, which is defined as having four (4) walls, a roof; and a door; and c. The structure was unlawfully entered to commit a felony or theft.

- **Criminal Homicide:** a. Manslaughter by Negligence: The killing of another person through gross negligence. Any death caused by the gross negligence of another (i.e., something a reasonable and prudent person would not do). “Gross negligence” is the intentional failure to perform a manifest duty in reckless disregard of the consequences as affecting the life or property of another. b. Murder and Non-Negligent Manslaughter: The willful (non-negligent) killing of one (1) human being by another. Any death caused by injuries received in a fight, argument, quarrel, assault, or the commission of a crime. Suicides, fetal deaths, traffic fatalities, accidental deaths, assaults with intent to murder, attempts to murder, deaths by negligence; or justifiable homicides are not included in this definition.
- **Motor Vehicle Theft:** The theft or attempted theft of a motor vehicle. Theft of any self-propelled vehicle that runs on a land surface(s) and not on rails, such as sport utility vehicles, automobiles, trucks, buses, motorcycles, motor scooters, trail bikes, mopeds, all-terrain vehicles, self-propelled motor homes, snowmobiles, golf carts; and motorized wheelchairs. This offense includes all incidents where automobiles are taken by persons not having lawful access, even

though the vehicles are later abandoned, and joy riding. This offense does not include thefts from a motor vehicle.

- **Robbery:** The taking or attempting to take anything of value from the care, custody; or control of a person or persons by force or threat of force or violence and/or by putting the victim in fear. This definition includes armed robbery, robbery where only personal weapons (e.g., hands, fists, feet) are used; and carjacking. The essential elements of a robbery include:
  - » Being committed in the presence of a victim (usually the owner or person having custody of the property)
  - » The victim being directly confronted by the perpetrator
  - » The victim being threatened with force or put in fear that force will be used
  - » Involving a theft or larceny.
- **Sexual Assault:** Any sexual act directed against another person, without consent of the victim, including instances where the victim is incapable of giving consent. Includes attempted sexual assaults. For Clery Act purposes, this only includes the four (4) types of sexual assault listed below.
  - » **Fondling:** The touching of the private body parts of another person for the purpose of sexual gratification, without the consent of the victim, including instances where the victim is incapable of giving consent because of their age or because of their temporary or permanent mental incapacity.

## Section 1: Crime Statistics

---

- » **Incest:** Sexual intercourse between persons who are related to each other within the degrees wherein marriage is prohibited by law.
- » **Rape:** The penetration, no matter how slight, of the vagina or anus, with any body part or object, or oral penetration by a sex organ of another person, without the consent of the victim. This offense includes the rape of both males and females, incidents in which force was used or threatened, incidents in which the victim was incapable of giving consent because of their age, and incidents in which the victim was incapable of giving consent due to temporary or permanent mental impairment.
- » **Statutory Rape:** Sexual intercourse with a person who is under the statutory age of consent. Note: The statutory age of consent in the state of Texas is 17.

### Arrests and Referrals for Disciplinary Action

- **Drug Abuse Violations:** The violation of laws prohibiting the production, distribution; and/or use of certain controlled substances and the equipment or devices utilized in their preparation and/or use. The unlawful cultivation, manufacture, distribution, sale, purchase, use, possession, transportation; or importation of any controlled drug or narcotic substance. Arrests for violations of state and local laws, specifically those relating to the unlawful possession, sale, use, growing, manufacturing; and making of narcotic drugs. The relevant substances include opium or cocaine and their derivatives (e.g., morphine, heroin, codeine); marijuana; synthetic narcotics (e.g., Demerol, methadone); and dangerous nonnarcotic drugs (e.g., barbiturates, Benzedrine).
- **Liquor Law Violations:** The violation of state or local laws or ordinances prohibiting the manufacture, sale, purchase, transportation, possession; or use of alcoholic beverages, not including driving under the influence and drunkenness.
- **Weapons: Carrying, Possessing, Etc.:** The violation of laws or ordinances prohibiting the manufacture, sale, purchase, transportation, possession, concealment; or use of firearms, cutting instruments, explosives, incendiary devices; or other deadly weapons. This classification encompasses weapons offenses that are regulatory in nature.

### Violence Against Women Act (VAWA) Offenses

- **Dating Violence:** Violence committed by a person who is or has been in a social relationship of a romantic or intimate nature with the victim. The existence of such a relationship shall be determined based on the reporting party's statement and with consideration of the length of the relationship, the type of relationship; and the frequency of interaction between the persons involved in the relationship. Dating violence includes, but is not limited to, sexual or physical abuse or the threat of such abuse. Dating violence does not include acts covered under the definition of domestic violence below.
- **Domestic Violence:** A felony or misdemeanor crime of violence committed by a current or

## Section 1: Crime Statistics

---

former spouse or intimate partner of the victim; by a person with whom the victim shares a child in common; by a person who is cohabitating with, or has cohabitated with, the victim as a spouse or intimate partner; by a person similarly situated to a spouse of the victim under the domestic or family violence laws of the jurisdiction in which the crime of violence occurred; or by any other person against an adult or youth victim who is protected from that person's actions under the domestic or family violence laws of the jurisdiction in which the violence occurred.

- **Stalking:** Engaging in a course of conduct directed at a specific person that would cause a reasonable person to fear for the person's safety or the safety of others; or suffer substantial emotional distress. "Course of conduct" means two (2) or more acts, including, but not limited to, acts in which the stalker directly, indirectly; or through third parties, by any action, method, device; or means, follows, monitors, observes, surveils, threatens; or communicates to or about a person, or interferes with a person's property. "Reasonable person" means a reasonable person under similar circumstances and with similar identities to the victim. "Substantial emotional distress" means significant mental suffering or anguish that may, but does not necessarily, require medical or other professional treatment or counseling.

### Hate Crimes

A Hate Crime is a criminal offense that manifests evidence the victim was intentionally selected

because of the perpetrator's bias against the victim. When a Hate Crime is reported, the appropriate type of bias must also be reported. The following definitions apply to the eight (8) categories of bias which are reported under the [Clery Act](#):

- **Disability:** A preformed negative opinion or attitude toward a group of persons based on their physical or mental impairments, whether such disability is temporary or permanent, congenital; or acquired by heredity, accident, injury, advanced age; or illness.
- **Ethnicity:** A preformed negative opinion or attitude toward a group of people whose members identify with each other through a common heritage, often consisting of a common language, common culture (often including a shared religion); and/or ideology that stresses common ancestry.
- **Gender:** A preformed negative opinion or attitude toward a person or group of persons based on their actual or perceived gender (e.g., male or female).
- **Gender Identity:** A preformed negative opinion or attitude toward a person or group of persons based on their actual or perceived gender identity (e.g., bias against transgender or gender nonconforming individuals).
- **National Origin:** A preformed negative opinion or attitude toward a group of people based on their actual or perceived country of birth.
- **Race:** A preformed negative attitude toward a group of persons who possess common physical characteristics (e.g., color of skin,



## Section 1: Crime Statistics

---

eyes; and/or hair; facial features; etc.) genetically transmitted by descent and heredity which distinguish them as a distinct division of humankind (e.g., Asians, Blacks or African Americans, whites).

- **Religion:** A preformed negative opinion or attitude toward a group of persons who share the same religious beliefs regarding the origin and purpose of the universe and the existence or nonexistence of a supreme being (e.g., Catholics, Jews, Protestants, atheists).
- **Sexual Orientation:** A preformed negative opinion or attitude toward a group of persons based on their actual or perceived sexual orientation.

For Clery Act purposes, Hate Crimes include the following seven (7) Criminal Offenses that are motivated by bias:

- Aggravated Assault
- Arson
- Burglary
- Motor Vehicle Theft
- Murder and Non-Negligent Manslaughter
- Robbery
- Sexual Assault (i.e., Fondling, Incest, Rape, and Statutory Rape)

These offenses are defined in the Criminal Offenses subsection above.

In addition, the following four (4) offenses must be included in the crime statistics only if they are Hate Crimes:

- **Destruction/Damage/Vandalism of Property:** To willfully or maliciously destroy, damage, deface; or otherwise injure real

or personal property without the consent of the owner or the person having custody or control of it (e.g., cutting automobile tires, drawing obscene pictures on walls, smashing windows, destroying school records, defacing library books).

- **Intimidation:** To unlawfully place another person in reasonable fear of bodily harm through the use of threatening words and/or other conduct, but without displaying a weapon or subjecting the victim to actual physical attack. This category includes cyber-intimidation if the victim was threatened via electronic means while on Collin College's Clery Act geography.
- **Larceny–Theft:** The unlawful taking, carrying, leading; or riding away of property from the possession or constructive possession of another. "Constructive possession" is the condition in which a person does not have physical custody or possession, but is in a position to exercise dominion or control over a thing.
- **Simple Assault:** An unlawful physical attack by one (1) person upon another where neither the offender displays a weapon nor the victim suffers obvious severe or aggravated bodily injury involving apparent broken bones, loss of teeth, possible internal injury, severe laceration; or loss of consciousness.

### 1.3 Counting and Disclosing Crime Statistics

Crime statistics must be disclosed separately for each of the four (4) categories listed in the Collecting Crime Statistics section of this

# Section 1: Crime Statistics

---

document. This means that when an incident meets a definition in more than one (1) of these categories, it must be reported in each category. For example, any crime that meets the definition of a Criminal Offense and also meets the definition of a Hate Crime must be counted in both the Criminal Offenses and Hate Crimes categories.

## **Hierarchy Rule**

When counting multiple offenses within the Criminal Offenses category, the FBI's UCR "Hierarchy Rule" is used for Clery Act reporting purposes. Under the Hierarchy Rule, when more than one (1) Criminal Offense was committed during a single incident, only the most serious offense is counted. A "single incident" means the offenses were committed at the same time and place. For example, if a student was both raped and robbed during a single incident, only the rape would be counted in the crime statistics because it is classified as the more serious crime under the Hierarchy Rule. The hierarchy for Clery Act reporting, beginning with the most serious offense, is as follows:

- Murder and Non-Negligent Manslaughter
- Manslaughter by Negligence
- Sexual Assault (i.e., Rape, Fondling, Incest, and Statutory Rape)
- Robbery
- Aggravated Assault
- Burglary
- Motor Vehicle Theft

## **Exceptions to the Hierarchy Rule**

There are exceptions to the Hierarchy Rule which apply to arson, sexual assaults, Arrests

and Referrals for Disciplinary Action, Violence Against Women Act (VAWA) Offenses, and Hate Crimes.

## **Rules for Counting Arson**

The rules for counting arson are:

- Arson is always counted regardless of the nature of any other offense(s) that was committed during the same incident,
- When multiple offenses are committed during the same distinct operation as the arson offense, the most serious offense is reported along with the arson, and
- Incidents in which persons are killed as a direct result of arson must be included as either murder and non-negligent manslaughter and arson, or manslaughter by negligence and arson.

## **Rules for Counting Sexual Assaults**

The rules for counting sexual assaults are:

- If fondling, incest, rape, or statutory rape occurs in the same incident as murder, both the sexual assault and the murder must be counted.
- Because fondling is recognized as an element of the other sexual assaults, an incident should be counted as fondling if that was the only sexual assault that occurred.
- If fondling occurs in the same incident as murder, both the fondling and the murder must be counted.

## **Rules for Counting Arrests and Referrals for Disciplinary Action**

Arrests and Referrals for Disciplinary Action only include violations of the law, not violations of Collin College's policies that resulted in

# Section 1: Crime Statistics

---

persons being referred for disciplinary action if there was no violation of the law. For example, if an individual over the age of 21 is caught in possession of alcohol in their on-campus residence and referred to the District Dean of Students Office for disciplinary action, this is a violation of Collin College's alcohol policy and not a law violation. Therefore, this incident will not be included in the crime statistics. If an individual is both arrested and referred for disciplinary action for an offense, only the arrest will be included in the crime statistics. Arrests and Referrals for Disciplinary Action are not covered by the Hierarchy Rule. Therefore, arrests for weapons, drug abuse, and liquor law violations must be counted in addition to the most serious Criminal Offense when multiple offenses occur in a single incident.

## **Rules for Counting Violence Against Women Act (VAWA) Offenses**

The Hierarchy Rule does not apply to Violence Against Women Act (VAWA) Offenses. Therefore, for any Criminal Offense, Hate Crime, or Arrests and Referrals for Disciplinary Action crime that is also a VAWA Offense, the statistics must reflect both the original offense and the VAWA Offense.

## **Rules for Counting Hate Crimes**

The Hierarchy Rule does not apply to Hate Crimes. Therefore, all of the offenses committed in a bias-motivated incident must be counted in the statistics for each crime. For example, if a single bias-motivated incident is reported that involves both an aggravated assault and motor vehicle theft, the incident must be included in both categories.

For any Criminal Offense that is also a Hate Crime, the crime statistics must indicate the offense and also the offense with the category of bias. For example, if an aggravated assault is a Hate Crime, it must be included in the aggravated assault statistics under the Criminal Offenses category and also in the aggravated assault motivated by the appropriate type of bias in the Hate Crimes category.

## **1.4 Collection and Reporting Procedures**

In accordance with the [Clery Act](#), Collin College collects statistics for the following four (4) categories of crimes:

- Criminal Offenses
- Arrests and Referrals for Disciplinary Action
- Violence Against Women Act (VAWA) Offenses
- Hate Crimes

Campus crime statistics are collected annually by the Collin College Police Department. These statistics include all incidents reported to the Collin College Police Department, campus security authorities (CSAs); and local law enforcement agencies that occur within Collin College's Clery Act geography. Reports of crimes that are submitted anonymously are also counted and disclosed in the annual campus crime statistics. The Collin College Police Department requests and makes a reasonable, good-faith effort to obtain crime statistics from the local law enforcement agencies with jurisdiction over some or all of Collin College's Clery Act geography. However, the Clery Act does not require local law enforcement agencies to



# Section 1: Crime Statistics

---

provide Collin College with crime statistics, and Collin College is not responsible for local law enforcement agencies' failure to supply them. Additionally, the Clery Act does not require Collin College to verify the accuracy of the crime statistics provided by local law enforcement agencies. However, Collin College is required to ensure the statistics received cover only Collin College's Clery Act geography and do not also include other areas.

As required by the Clery Act, campus crime statistics for each of Collin College's campuses and centers during the three (3) previous calendar years (i.e., January 1 through December 31) are located in [Appendix B](#).

## 1.5 Campus Maps of Clery Geography

Maps showing the boundaries of Clery geography for each Collin College campus are provided in [Appendix A](#).

## 1.6 Crime Statistics Tables for Calendar Years 2022–2024

Tables summarizing reported crimes for each campus, broken down by year and location, are included in [Appendix B](#).



## Section 2: Reporting Policies and Procedures

---

### 2.1 Reporting Criminal Actions and Other Emergencies

Collin College encourages accurate and prompt reporting of all crimes to the Collin College Police Department (CCPD) and appropriate law enforcement agencies when the victim of a crime elects to or is unable to make such a report.

Emergencies should be reported by calling 972.578.5555 or 911. Reports may also be made in person at any campus police department location.

Students and employees may report crimes on a voluntary, confidential basis for inclusion in the annual disclosure of crime statistics by contacting the CCPD or a Campus Security Authority (CSA).

### 2.2 Campus Security Authorities (CSAs)

“Campus security authority (CSA)” is a [Clery Act](#)-specific term that encompasses the following four (4) groups of individuals and organizations associated with an institution:

- A campus police department or a campus security department of an institution.
- Any individual or individuals who have responsibility for campus security but who do not constitute a campus police department or a campus security department (e.g., an individual who is responsible for monitoring the entrance into institutional property).
- Any individual or organization specified in an institution’s statement of campus security policy as an individual or organization to which students and employees should report criminal offenses.
- An official of an institution who has significant responsibility for student and campus activities, including, but not limited to, student housing, student discipline; and campus judicial proceedings. An “official” is defined as any person who has the authority and duty to take action or respond to particular issues on behalf of the institution.

Collin College students and employees are encouraged to report crimes to a CSA for the purpose of issuing emergency notifications and timely warning notices and inclusion in the annual disclosure of crime statistics. At Collin College, CSAs include the following employees:

- All Collin College Police Department officers, sergeants, lieutenants, and the chief of police.
- The district dean of students, associate dean of Title IX compliance, associate deans of students, and student conduct officers.
- The chief student success officer, vice president of student and enrollment services, associate vice president of student and enrollment services, deans of student and enrollment services, and associate deans of student and enrollment services.
- All campus provosts.
- All academic/workforce deans, associate academic/ workforce deans, and program directors.
- All evening and weekend administrators.
- The director of student housing operations and all resident life staff.
- All athletics directors and associate athletics directors.

## Section 2: Reporting Policies and Procedures

---

- All athletics coaches, assistant coaches, volunteer coaches, and trainers.
- All student organization advisors.
- Any other employees who have a significant responsibility for student and campus activities (e.g., student travel responsible parties).

CSAs must promptly forward all crime reports to the Collin College Police Department so crimes can be accurately counted, disclosed in the annual crime statistics, and entered on the daily crime log.

In addition to reporting potential Title IX violations to the appropriate [Title IX coordinator or deputy Title IX coordinator](#), any Collin College employee who suspects or receives notice that a student or group of students has or may have experienced dating violence, domestic violence, sexual assault, or stalking must complete and submit the Campus Security Authority (CSA) Crime Reporting Form when a Clery Act crime is reported. Employees must promptly forward all crime reports to the Collin College Police Department so crimes can be accurately counted, disclosed in the annual crime statistics, and entered on the daily crime log. The appropriate Title IX coordinator or deputy [Title IX](#) coordinator will also report information about any Clery Act crimes to the Collin College Police Department for inclusion in the annual crime statistics and daily crime log.

When a Clery Act crime is reported to a CSA, the CSA must complete the Campus Security Authority (CSA) Crime Reporting Form located at [collin.guardianconduct.com/incident-reporting/new?incident\\_type=Campus%20Security%20Authority%20\(CSA\)%20Crime%20](http://collin.guardianconduct.com/incident-reporting/new?incident_type=Campus%20Security%20Authority%20(CSA)%20Crime%20)

[Reporting%20Form](#). If a CSA has questions regarding the Campus Security Authority (CSA) Crime Reporting Form or needs to provide additional information about the alleged incident(s), they should contact:

### **Rita Fernaine**

Manager of Accreditation  
and Clery Compliance  
Collin College Police Department  
Courtyard Center  
4800 Preston Park Blvd  
Plano, TX 75093  
Phone: 972.881.5698  
Email: [ritafernaine@collin.edu](mailto:ritafernaine@collin.edu)

This process is used to ensure crimes reported to a CSA, but not to a law enforcement agency, will be accurately counted and included in the annual crime statistics and daily crime log. For more information, contact the Collin College Police Department at 972.578.5555.

### **2.3 Pastoral and Professional Counselors**

Campus pastoral and professional counselors, when acting as such, are not considered to be a campus security authority (CSA), and are not required by the [Clery Act](#) to report crimes for inclusion in the annual crime statistics and daily crime log.

Collin College does not employ any pastoral counselors. As a matter of policy, the licensed mental health professionals at Collin College are encouraged, if and when they deem it appropriate, to inform persons being counseled of the procedures to report crimes on a voluntary confidential basis to the Collin College Police



## Section 2: Reporting Policies and Procedures

---

Department for inclusion in the annual disclosure of campus crime statistics and daily crime log. Collin College's licensed mental health professionals are informed during monthly staff meetings and various training sessions throughout each calendar year of the procedures to report crimes to the Collin College Police Department. Collin College's licensed mental health professionals are encouraged to inform their clients of the procedures to report crimes to the Collin College Police Department on a voluntary confidential basis should they feel it is in the best interest of their clients. Additionally, crimes can be confidentially discussed with Collin College's licensed mental health professionals, and victims have the right to not report a crime if they so choose.

In accordance with the [Texas Education Code, Section 51.252](#), Collin College's licensed mental health professionals must report any incident of dating violence, sexual assault, sexual harassment, or stalking to the appropriate Collin College Title IX coordinator or deputy Title IX coordinator, even if the incident was reported during a confidential counseling session. However, the licensed mental health professional is only required to report the type of incident, and is not required to report identifying information regarding the victim, respondent, and witnesses, or details of the incident.

### 2.4 Employee Mandatory Reporting Under State Law for Incidents of Dating Violence, Sexual Assault, Sexual Harassment, and Stalking

*Note: Submitting a Mandatory Reporting Form for Incidents of Dating Violence, Domestic*

*Violence, Sexual Assault, Sexual Harassment, and Stalking does not constitute filing a formal complaint for the purposes of initiating the Title IX complaint resolution process. To initiate the Title IX complaint resolution process, the complainant must submit a formal complaint to the appropriate Title IX coordinator or deputy Title IX coordinator.*

In accordance with the [Texas Education Code Section 51.252](#), a Collin College employee who, in the course and scope of employment, witnesses or receives information regarding the occurrence of an incident that the employee reasonably believes constitutes dating violence, sexual assault, sexual harassment, or stalking as defined in this document, and is alleged to have been committed by or against a person who was a student enrolled at or an employee of Collin College at the time of the incident will promptly report the incident to Collin College's Title IX coordinator or deputy Title IX coordinator. The report must include all information concerning the incident known to the reporting person that is relevant to the investigation and, if applicable, redress of the incident, including whether an alleged victim has expressed a desire for confidentiality in reporting the incident.

In accordance with the [Texas Education Code Section 51.252](#), an employee who is designated by Collin College as a person with whom students may speak confidentially concerning dating violence, sexual assault, sexual harassment, or stalking as defined in this document, or who receives information regarding such an incident under circumstances that render the employee's communications confidential

## Section 2: Reporting Policies and Procedures

---

or privileged under other law will, in making a report under this section, state only the type of incident reported and may not include any information that would violate a student's expectation of privacy. This requirement does not affect the employee's duty to report an incident under any other law.

### **Peace Officer**

A Collin College peace officer who received information regarding an incident from an alleged victim who chooses to complete a pseudonym form as described by law will, in making a report, state only the type of incident reported and may not include the victim's name, phone number, address, or other information that may directly or indirectly reveal the victim's identity.

### **Exceptions**

A Collin College employee is not required to make a report concerning:

- An incident in which the employee was a victim of dating violence, sexual assault, sexual harassment, or stalking; or
- An incident in which the employee received information due to a disclosure made at a dating violence, sexual assault, sexual harassment, or stalking public awareness event sponsored by Collin College or by a student organization affiliated with Collin College.

### **Mandatory Reporting Form**

Collin College employees can access the Mandatory Reporting Form for Incidents of Dating Violence, Domestic Violence, Sexual Assault, Sexual Harassment, and Stalking online at [collin.guardianconduct.com/login](http://collin.guardianconduct.com/login) or under the "Crisis

Response" channel on the My Workplace tab in CougarWeb ([cougarweb.collin.edu](http://cougarweb.collin.edu)).

### **2.5 Timely Warning Policy**

Collin College will issue timely warnings to the campus community for Clery crimes that pose a serious or ongoing threat, as determined by CCPD in coordination with college leadership.

Timely warnings are issued through Cougar Alerts, the [college website](http://college website), email, and other appropriate channels.

Collin College will not include names or other personally identifying information in timely warnings.

### **2.6 Annual Disclosure of Crime Statistics**

The Clery Compliance Officer, in coordination with the Chief of Police, is responsible for collecting crime data from CSAs and local law enforcement.

These data are compiled and submitted to the U.S. Department of Education and published in the Annual Security Report by October 1 each year.

### **2.7 Voluntary Confidential Reporting**

Victims or witnesses may report crimes confidentially to the CCPD for inclusion in the annual security report statistics without revealing their identity.

Confidential reports may also be made through designated campus officials or the Threat Assessment Management Team (TAMT) when applicable.

## Section 3: Campus Security Policies

---

### 3.1 Security and Access to Campus Facilities

All Collin College campuses and centers are part of the cities in which they are located, and, as such, are open to students, faculty, staff, and the public. The Collin College Police Department and Facilities and Plant Operations are responsible for monitoring and enforcing policies and procedures regarding security of and access to Collin College's facilities. During business hours, Collin College facilities will be open to students, parents, employees, contractors, guests, and invitees.

During non-business hours and periods when Collin College buildings are closed, access to Collin College facilities is by security badge, key (if issued), or by admittance via the Collin College Police Department or Facilities and Plant Operations. In the case of periods of extended closing, Collin College will admit only those individuals who have obtained prior written approval to its facilities.

#### **Academic and Administrative Buildings**

Collin College's academic and administrative buildings are open to the public, at a minimum, during normal business hours (i.e., Monday through Friday from 8:00 a.m. to 5:00 p.m.). Some facilities have individual hours which may vary at different times of the year (e.g., Fitness Centers and Libraries). In these cases, the facilities will be secured according to schedules developed by the department responsible for that specific facility, in consultation with the Collin College Police Department and Facilities and Plant Operations. Most academic and administrative buildings do not have a

specific Collin College Police Department officer assigned to them. However, Collin College Police Department officers patrol all academic and administrative buildings on a regular basis. For information regarding the access protocol for a specific building, contact the Collin College Police Department at 972.578.5555.

#### **Academic and Administrative Building Hours**

For more information regarding the academic and administrative building hours at each campus and center, go to [www.collin.edu/campuses](http://www.collin.edu/campuses) and click on the campus or center.

#### **Residential Buildings**

Access to Collin College Student Housing residential buildings is restricted to student residents, their approved guests, Student Housing and Resident Life staff, and other approved members of the Collin College community. Student residents are cautioned against permitting strangers to enter the buildings and are urged to require individuals seeking entry to check in at the Collin College Student Housing Office.

Collin College Police Department officers actively patrol Collin College Student Housing on a regular basis. Additionally, police officers now have a dedicated office in Student Housing, Room 715. Student Housing and Resident Life staff also enforce safety and security measures at Collin College Student Housing, and work with student residents to achieve a community that is respectful of individual and group rights and responsibilities. Student Housing and Resident Life staff and Collin College Police Department officers also conduct periodic educational sessions on prevention of



## Section 3: Campus Security Policies

---

various crimes, including, but not limited to, sexual assault and acquaintance rape.

The Collin College Student Housing Leasing Office hours are Monday through Thursday from 9:00 a.m. to 6:00 p.m. and Friday from 8:00 a.m. to 5:00 p.m. The office may occasionally close for holidays, inclement weather; or other circumstances. If the office is closed, a sign will be placed on the office front door. The sign will include information as to when the office will be closed, when it will reopen; and the number to call for maintenance emergencies. For scheduled closings, the director of student housing operations or designee will provide a minimum of 72 hours' notice prior to the date of closing.

The Collin College Student Housing grounds and individual student residents' apartments are accessible by access code and keys, issued to each student resident during the check-in process, 24 hours a day, seven (7) days a week.

Quiet hours for Collin College Student Housing begin at 10:00 p.m. every night. Residents should not congregate in the hallways or stairwells during quiet hours. Violations could result in the loss of privileges.

### **Changes to Normal Building Hours**

Any changes to normal building hours will be noted by signs posted on the doors at each building's entrances and exits. Emergencies may necessitate changes or alterations to posted schedules. In an emergency situation, the Collin College community will be notified of the changes to building hours via Collin College's [CougarAlert](#) emergency notification system.

### **3.2 Security Considerations in Maintenance**

Collin College is committed to safety and security at all its facilities and grounds. Collin College designs security and safety into systems for locks, landscaping, and outdoor lighting. Sidewalk designs and illumination of sidewalks and building entrances provide well-traveled, lighted routes from parking areas to buildings and from building to building.

Security surveys are conducted on areas that are revealed as problematic to examine various security issues (e.g., landscaping, locks, alarms, lighting). Administrators from each Campus Provost's Office, Facilities and Plant Operations, and other concerned areas review the results of these surveys and recommend appropriate measures to resolve the issues, as necessary.

#### **Facilities and Landscaping Maintenance**

Facilities and landscaping are maintained in a manner that minimizes hazardous conditions. Facilities and Plant Operations staff at each campus and center regularly evaluate both interior and exterior lighting and perform necessary changes or repairs as needed. Collin College Police Department officers regularly patrol all Collin College campuses and centers, and reports of maintenance concerns such as malfunctioning lights and other unsafe physical conditions are submitted to Facilities and Plant Operations staff for correction. All members of the Collin College community are helpful when they promptly report equipment, facilities, landscaping, and maintenance concerns to Facilities and Plant Operations staff.

## Section 3: Campus Security Policies

---

### Reporting Safety, Security, and Maintenance Concerns

To report a safety or security concern, contact the Collin College Police Department at 972.578.5555, extension 5555 from any campus phone, or in person at any of the Collin College Police Department office locations. To report a maintenance concern (e.g., landscaping, lighting, locking mechanisms), contact the Facilities and Plant Operations Department at any of the following campus locations:

- Celina Campus: 469.905.3557
- Collin Higher Education Center: 972.599.3155
- Courtyard Center: 972.985.3777
- Farmersville Campus: 972.549.6453
- Frisco Campus: 972.377.1690
- McKinney Campus: 972.548.6690
- Plano Campus: 972.881.5690
- Public Safety Training Center: 972.549.6361
- Technical Campus: 972.553.1190
- Wylie Campus: 972.378.8690

### 3.3 Daily Crime Log

The Collin College Police Department maintains a daily log of police activity. The purpose of the daily crime log is to record all criminal incidents and alleged criminal incidents that are reported to the Collin College Police Department. The daily crime log includes information on the:

- Date the crime was reported to the Collin College Police Department.
- Date and time the crime occurred.
- Nature of the crime.
- General location of the crime.

- Disposition of the complaint (if known).

For the most current information contained in the daily crime log, go to [www.collin.edu/campuspolice/crimelog](http://www.collin.edu/campuspolice/crimelog), call 972.578.5555, or visit the Collin College Police Department in person at any of the following campus locations:

- Celina Campus: Room 129
- Collin Higher Education Center: Room 134
- Courtyard Center: Room 125
- Farmersville Campus: Room 103
- Frisco Campus: Room LH-179
- McKinney Campus: Room C-121
- Plano Campus: Suite C-101
- Technical Campus: Room C-010
- Wylie Campus: Room B-139



## Section 4: Law Enforcement Policies

---

### 4.1 Law Enforcement Authority and Jurisdiction

The Collin College Police Department protects and prevents criminal activities and threats through community policing by creating a bond with students, faculty, and staff. This proactive approach develops trust between the Collin College Police Department officers and those they serve.

The Collin College Police Department is organized, trained; and equipped to respond to criminal activity as well as real or perceived physical threats to the Collin College community. The Collin College Police Department accomplishes this through constant collaboration with other Collin College departments and municipal agencies.

The Collin College Police Department is staffed with Texas State Licensed Law Enforcement Officers who are trained to protect life as well as Collin College and personal property. The Collin College Police Department Communications Center is staffed with Texas Commission on Law Enforcement (TCOLE) licensed police telecommunicators.

All municipal, local, state, and federal laws; as well as the [Student Code of Conduct](#), Board policies; and Collin College procedures, including motor vehicle laws, will be enforced on all Collin College campuses and centers. Collin College Police Department officers patrol all Collin College campuses and centers 24 hours a day, seven (7) days a week, 365 days a year.

The Collin College Police Department's primary jurisdiction is any property owned or controlled by Collin College. Local, county, and state law

enforcement agencies have concurrent jurisdiction on Collin College property. Per the [Texas Education Code, Section 51.203 Campus Peace Officers](#), Collin College Police Department officers are empowered with countywide jurisdiction and work under the same authority as municipal and county agencies. Therefore, they have complete authority to apprehend and arrest anyone involved in illegal acts throughout Collin County.

If offenses involving Collin College policies and procedures are committed by a Collin College student, the Collin College Police Department may also refer the individual to the District Dean of Students Office for appropriate disciplinary action. If offenses involving Collin College policies and procedures are committed by a Collin College employee, the Collin College Police Department may also refer the individual to the Human Resources Department for appropriate disciplinary action.

When major offenses (e.g., aggravated assault, motor vehicle theft, murder and non-negligent manslaughter, robbery, sexual assault) are reported to the Collin College Police Department, assistance may be requested from local law enforcement agencies to investigate and solve these serious felony crimes. The prosecution of all felony and misdemeanor criminal offenses is conducted at Municipal, Justice of the Peace, or Collin County Courts.

#### Citations

All citations issued by the Collin College Police Department are adjudicated in Justice of the Peace courts in Collin County, Texas, or Rockwall County, Texas.



## Section 4: Law Enforcement Policies

---

### **Criminal Trespass Warning Notice**

The Collin College Police Department may issue a Criminal Trespass Warning Notice to a Collin College student, employee, or community member. Criminal trespass warning notices prohibit an individual from entering any Collin College buildings or properties for a specified period of time. Violating a criminal trespass warning notice is a Class B misdemeanor (first offense) and carries a penalty of up to 180 days in jail. For more information, contact the Collin College Police Department at 972.578.5555.

### **Court Orders and Orders of Protection**

Victims have the right to seek a no-contact order, order of protection, restraining order, or similar lawful orders through a civil, criminal, or tribal court. The Collin College Police Department does not issue court orders or orders of protection. Victims must contact a local law enforcement agency and/or a local court to obtain court orders or orders of protection. Once a victim notifies the Collin College Police Department, they are in possession of a court order or order of protection, the Collin College Police Department will enforce the order, as appropriate. For more information on court orders and orders of protection that are available in the State of Texas, see the [Court Orders and Orders of Protection Available in Texas](#).

### **Searches**

To view the Board policies associated with this section, go to [pol.tasb.org/PolicyOnline/PolicyDetails?key=304](http://pol.tasb.org/PolicyOnline/PolicyDetails?key=304).

### **Searches in General**

Collin College officials may conduct searches of students, their belongings, and their vehicles

in accordance with state and federal law and Collin College policy. Searches of students will be conducted in a reasonable and nondiscriminatory manner.

Collin College officials may initiate a search in accordance with law, including, for example, based on reasonable suspicion, voluntary consent, or pursuant to Collin College policy providing for suspicionless security procedures, including the use of metal detectors.

In accordance with Collin College policies and procedures, students are responsible for prohibited items found in their possession, including items in their personal belongings or in vehicles parked on Collin College property. For more information, see Board policy FLB (LOCAL) located at [pol.tasb.org/PolicyOnline?key=304](http://pol.tasb.org/PolicyOnline?key=304).

### **Reasonable Suspicion Searches**

#### **Students**

Searches should be reasonable at their inception and in scope. If there is reasonable suspicion to believe that searching a student's person, belongings, or vehicle will reveal evidence of a violation of Collin College policy and procedures, a Collin College official may conduct a search in accordance with the law and Collin College regulations.

#### **Employees**

In accordance with Board policy [DHA \(LOCAL\)](#), Collin College reserves the right to conduct searches when Collin College has reasonable cause to believe that a search will uncover evidence of work-related misconduct. Collin College may search the employee, the employee's personal items, work areas, lockers, and private vehicles parked on Collin College

## Section 4: Law Enforcement Policies

---

premises or worksites or used in College District business. Searches that reveal a violation of Collin College's standards of conduct may result in disciplinary action. For more information regarding employee standards of conduct, see Board policy DH (LOCAL) located at [pol.tasb.org/PolicyOnline?key=304](https://pol.tasb.org/PolicyOnline?key=304).

### ***Suspicionless Searches***

For purposes of this policy, a suspicionless search is a search carried out based on lawful security procedures, such as metal detector searches or random drug testing.

### ***Use of Trained Dogs***

Collin College reserves the right to use trained dogs to conduct screening for concealed prohibited items. Such procedures will be unannounced. The dogs will not be used with students; however, students may be asked to leave personal belongings in an area that will be screened. If a dog alerts to an item or area, it may be searched by Collin College officials.

### ***Collin College Property***

Collin College-provided technology, storage, and similar items are the property of Collin College and are provided for student use as a matter of convenience. Collin College property is subject to search or inspection at any time without notice. Students have no expectation of privacy in their use of Collin College property. Students will be fully responsible for the security and contents of Collin College property assigned to them. Students will not place or keep in Collin College-provided technology, storage; or similar item, any article or material prohibited by law or Collin College policy and procedures. A student will be held responsible

for any prohibited item found in Collin College property provided to the student.

### ***Residence Hall Rooms***

Searches of student residence hall rooms will be conducted in accordance with administrative procedures established by the College District President or designee. The procedures will describe the situations for which a search may be conducted and distinguish searches by Collin College officials from law enforcement searches. Searches Conducted by Law Enforcement Searches and interrogations will be conducted by Collin College Police Department officers consistent with the law and Collin College Police Department procedures.

## **4.2 Working Relationship with Local, State and Federal Law Enforcement**

Collin College maintains strong working relationships with local, county, state, and federal law enforcement agencies.

Collin College Police Department personnel work closely with the following local, state, and/or federal agencies:

- Allen Police Department
- Celina Police Department
- Collin County Sheriff's Office
- Farmersville Police Department
- Frisco Police Department
- McKinney Police Department
- Plano Police Department
- Rockwall Police Department
- Wylie Police Department
- North Texas Fusion Center
- Federal Bureau of Investigation

## Section 4: Law Enforcement Policies

---

By mutual agreement with state and federal agencies, the Collin College Police Department maintains a National Law Enforcement Telecommunications System (NLETS) network terminal. Through this system, Collin College Police Department personnel can access the National Crime Information Center (NCIC) as well as the Texas Law Enforcement Telecommunication System (TLETS). These databases are used for accessing criminal history data; nationwide police records; driver/vehicle identification; and other local, state; and federal law enforcement information.

The Collin College Police Department participates in the Dallas-Fort Worth Law Enforcement Agency Mutual Aid Agreement through a memorandum of understanding (MOU) that includes most of the law enforcement agencies in the Dallas-Fort Worth metroplex. Additionally, MOUs are in place with the following agencies in the event the Collin College Police Department should require assistance investigating a criminal incident:

- Allen Police Department
- Celina Police Department
- Collin County Jail Services Interlocal Agreement
- Collin County
- Farmersville Police Department
- Frisco Police Department
- McKinney Police Department
- Plano Police Department
- Dallas-Fort Worth Regional
- Wylie Police Department

The Collin College Police Department has a general order and procedure prohibiting racial profiling and offers a complaint procedure. For more information, contact the Collin College Police Department at 972.578.5555.

For additional information on Collin College Police Department authority and jurisdiction, go to [www.collin.edu/campuspolice](http://www.collin.edu/campuspolice).

### 4.3 Crime Reporting Encouragement and Disclosure

The Collin College Police Department encourages anyone who is the victim of or a witness to any crime or public safety-related incident on a Collin College campus or center to promptly and accurately report the incident to the Collin College Police Department and/or appropriate local law enforcement agencies when the victim of a crime elects to, or is unable to, make such a report. Making a police report does not obligate the victim to file criminal charges, but it does create a record of the incident. The police report will include the victim's name, respondent's name, witnesses' names, and details of the incident. Police reports are public records under state law; however, voluntary confidential reports for purposes of inclusion in the annual disclosure of crime statistics can be made to the Collin College chief of police or designee.

Collin College Police Department officers are available 24 hours a day, 365 days a year to answer calls. If assistance is required from another police department, Collin College Police Department officers will contact the appropriate agency. If a sexual assault should occur, responding officers will inform the victim of the support services available.



## Section 4: Law Enforcement Policies

---

If the incident occurs on a Collin College campus or center, contact the Collin College Police Department Communications Center 24 hours a day by dialing 972.578.5555 (or 5555 from a campus phone) or pressing the “Emergency” button located at any Collin College System phone.

Any individual who prefers to report a crime or an emergency that occurred on a Collin College campus or center in person may do so at any of the Collin College Police Department office locations.

In a medical emergency, individuals should first dial 911, and then contact the Collin College Police Department Communications Center through one (1) of the methods listed above.

If an incident occurs off campus, the victim or witness should dial 911 and/or contact the appropriate law enforcement agency in the jurisdiction in which the incident occurred when the victim of a crime elects to, or is unable to, make such a report. If a victim requests assistance, a Collin College official will help the victim with this process.

If a fire occurs in a Collin College building, the individual who discovers it should immediately notify the Collin College Police Department at 972.578.5555 or dial 911. The Collin College Police Department will initiate a response and can summon the local fire department quickly through their communication links, if necessary. If a member of the Collin College community finds evidence of a fire that has been extinguished and is unsure whether the Collin College Police Department has already responded, they should immediately notify the

Collin College Police Department so an officer can investigate and document the incident.

In order to ensure inclusion in the annual crime statistics and aid in providing emergency notifications and timely warning notices to the Collin College community, all [Clery Act](#) crimes should be reported to the Collin College Police Department at 972.578.5555.

Additionally, when a Clery Act crime is reported to a campus security authority (CSA), the CSA must complete the Campus Security Authority (CSA) Crime Reporting Form located on Collin College’s website at [www.collin.edu/student-resources/deanofstudents/cleryact](http://www.collin.edu/student-resources/deanofstudents/cleryact). The completed Campus Security Authority (CSA) Crime Reporting Form must be submitted to Rita Fernaine, Collin College Police Department Manager of Accreditation and Clery Compliance, at the Collin Higher Education Center Room 134; or by email to [ritafernaine@collin.edu](mailto:ritafernaine@collin.edu). This process is used to ensure crimes reported to a CSA, but not to a law enforcement agency, will be included in the annual crime statistics. For more information regarding Collin College Police Department policies and procedures, go to [www.collin.edu/campuspolice](http://www.collin.edu/campuspolice).

### **Reporting a Non-Emergency Complaint or Concern**

Any individual who needs to report a non-emergency complaint or concern to the Collin College Police Department can send an email to [ccpd-comps@collin.edu](mailto:ccpd-comps@collin.edu).

For more information regarding Collin College Police Department policies and procedures, go to [www.collin.edu/campuspolice](http://www.collin.edu/campuspolice).

## Section 4: Law Enforcement Policies

---

### **Voluntary Confidential Reporting**

Collin College recognizes incidents of crime can be difficult to discuss, and victims and witnesses may want confidentiality in addition to support. Victims and witnesses of a crime who do not want to pursue action within the Collin College system or the criminal justice system may still want to consider making a voluntary confidential report. The Collin College Police Department can file a report on the details of the incident without revealing the victim's or witness's identity.

The purpose of a voluntary confidential report is to comply with the victim's or witness's wish to keep the matter confidential while taking steps to ensure the future safety of the victim, witness, and others. With such information, Collin College can keep an accurate record of the number of incidents involving students, employees, and visitors; determine where there is a pattern of crime with regard to a particular location, method, or assailant; and alert the campus community to potential danger. Reports filed in this manner are counted and disclosed in Collin College's annual [Clery Act](#) crime statistics.

To submit a voluntary confidential report, victims and witnesses can contact the Collin College Police Department Communications Center 24 hours a day by dialing 972.578.5555 (or 5555 from a campus phone) or pressing the "Emergency" button located at any Collin College System phone.

The victim or witness must inform the dispatcher they would like their name and any identifying information to remain confidential

at the start of the report. The victim or witness should provide as much detail as possible, and the dispatcher will take the report without including the victim's or witness's name or identifying information. If the victim or witness would prefer to submit a voluntary confidential report in person, they may do so at any of the Collin College Police Department office locations. When submitting a voluntary confidential report in person, the victim or witness must inform the Collin College Police Department officer they would like their name and any identifying information to remain confidential at the start of the report. The victim or witness should provide as much detail as possible, and the Collin College Police Department officer will take the report without including the victim's or witness's name or identifying information.

Additionally, victims and witnesses have the right not to report a crime if they so choose.

### **Anonymous Reports of Dating Violence, Sexual Assault, Sexual Harassment, and Stalking**

In accordance with the [Texas Education Code Section 51.252](#) and [Section 51.283](#), Collin College students and employees can report prohibited conduct anonymously or using a pseudonym by submitting the online form available at [collin.guardianconduct.com/incident-reporting?incident\\_type=TitleIXFormalComplaintForm](https://collin.guardianconduct.com/incident-reporting?incident_type=TitleIXFormalComplaintForm). However, the submission of an anonymous report or use of a pseudonym may impair Collin College's ability to investigate and address the prohibited conduct. Additionally, to initiate the Title IX complaint resolution process, complainants cannot remain anonymous.

## Section 4: Law Enforcement Policies

---

To report dating violence, sexual assault, sexual harassment; or stalking anonymously or using a pseudonym, victims can submit the online form available at [collin.guardianconduct.com/incident-reporting](http://collin.guardianconduct.com/incident-reporting) or contact the Collin College Police Department Communications Center 24 hours a day by dialing 972.578.5555 (or 5555 from a campus phone) or pressing the “Emergency” button located at any Collin College System phone. The victim should inform the dispatcher they would like to remain anonymous or use a pseudonym at the start of the report.

The victim should provide as much detail as possible, and the dispatcher will take the report using a pseudonym in place of the victim’s name.

To submit an in-person report of dating violence, sexual assault, sexual harassment, or stalking anonymously or using a pseudonym, victims can go to any of the Collin College Police Department office locations.

When submitting an anonymous report of dating violence, sexual assault, sexual harassment, or stalking in person, the victim should inform the Collin College Police Department officer they would like to remain anonymous or use a pseudonym at the start of the report. The victim should provide as much detail as possible, and the Collin College Police Department officer will take the report using a pseudonym in place of the victim’s name.

If a victim of dating violence, sexual assault, sexual harassment, or stalking files a report and later determines they would like to remain anonymous or use a pseudonym, the Collin College Police Department can assign a pseudonym to the victim. The victim must inform the Collin

College Police Department officer assigned to investigate the case over the phone or in writing that they would like a pseudonym assigned to them. The pseudonym will be used in place of the victim’s name to identify them on any further documentation that could become public information.

### **Reporting to a Local Law Enforcement Agency**

If an incident occurred off campus, the victim or witness should dial 911 and/or contact the appropriate law enforcement agency in the jurisdiction in which the incident occurred when the victim of a crime elects to, or is unable to, make such a report. If a victim requests assistance, a Collin College official will help the victim with this process. Contact information for local law enforcement agencies is located below.

### **Contact Information for Local Law Enforcement Agencies**

In an immediate life-threatening emergency, the victim or witness should contact emergency services at 911. Contact information for local law enforcement agencies with jurisdiction in Collin County, Texas, and Rockwall County, Texas, is listed below.

#### **Allen Police Department**

205 W. McDermott Drive

Allen, Texas 75013

Phone: 214.509.4200

Website: [cityofallen.org/2035/Police](http://cityofallen.org/2035/Police)

#### **Celina Police Department**

110 N. Colorado St.

Celina, Texas 75009

Phone: 972.382.2121

Website: [celina-tx.gov/187/Police-Department](http://celina-tx.gov/187/Police-Department)



## Section 4: Law Enforcement Policies

---

### **Collin County Sheriff's Office**

4300 Community Ave.

McKinney, Texas 75071

Phone: 972.547.5100

Website: [collincountytexas.gov/sheriff](http://collincountytexas.gov/sheriff)

### **Farmersville Police Department**

134 N. Washington St.

Farmersville, Texas 75442

Phone: 972.782.6141

Website: [farmersvilletexas.com/police](http://farmersvilletexas.com/police)

### **Frisco Police Department**

7200 Stonebrook Parkway

Frisco, Texas 75034

Phone: 972.292.6000

Website: [friscotexas.gov/239/Police](http://friscotexas.gov/239/Police)

### **McKinney Police Department**

2200 Taylor Burk Drive

McKinney, Texas 75071

Phone: 972.547.2700

Website: [mckinneytexas.org/166/Police](http://mckinneytexas.org/166/Police)

### **Plano Police Department**

909 14th St.

Plano, Texas 75074

Phone: 972.424.5678

Website: [plano.gov/1061/Police](http://plano.gov/1061/Police)

### **Rockwall Police Department**

205 W. Rusk St.

Rockwall, Texas 75087

Phone: 972.771.7717

Website: [rockwallpolice.org](http://rockwallpolice.org)

### **Wylie Police Department**

2000 N. Highway 78

Wylie, Texas 75098

Phone: 972.442.8171

Website: [wylie.texas.gov/police.php](http://wylie.texas.gov/police.php)

### **Disclosure of Results of Disciplinary Proceeding to the Alleged Victim of a Crime of Violence or Non-Forcible Sex Offense**

In accordance with federal laws, upon written request Collin College will disclose to the alleged victim of a crime of violence or non-forcible sex offense, as those terms are defined in [Title 18, § 16, United States Code](#) and the [Jeanne Clery Disclosure of Campus Security Policy and Campus Crime Statistics Act, 20 U.S.C., §1092 \(f\) \(Clery Act\)](#), the report on the results of any disciplinary proceeding(s) and/or appeal(s) conducted by Collin College against a student or employee who is the alleged perpetrator of such crime or offense. If the alleged victim is deceased as a result of such crime or offense, Collin College will treat the alleged victim's next of kin as the alleged victim, in accordance with the law.

In accordance with [Title 18, § 16, United States Code](#), the term "crime of violence" means:

- An offense that has as an element the use, attempted use; or threatened use of physical force against the person or property of another, or
- Any other offense that is a felony and that, by its nature, involves a substantial risk that physical force against the person or property of another may be used in the course of committing the offense.

For the purpose of this policy and in accordance with Board policy FJ (EXHIBIT), Collin College considers the following crimes to be crimes of violence:

## Section 4: Law Enforcement Policies

- Arson
- Assault Offenses:
  - » Aggravated Assault
  - » Intimidation
  - » Simple Assault
- Burglary
- Criminal Homicide: Manslaughter by Negligence
- Criminal Homicide: Murder and Non-Negligent Manslaughter
- Destruction/Damage/Vandalism of Property
- Kidnapping/Abduction (Note: This is not a Clery Act-reportable crime.)
- Robbery
- Sex Offenses, Forcible:
  - » Forcible Fondling
  - » Forcible Rape (Except Statutory Rape)
  - » Forcible Sodomy
  - » Sexual Assault with an Object
- Non-Forcible Sex Offenses (Except “Prostitution Offenses”):
  - » Incest
  - » Statutory Rape



## Section 5: Campus Security and Crime Prevention Programs

---

### 5.1 Vehicle Use and Operation

Bicycles and properly state-registered and -inspected motor vehicles are allowed on designated streets, roadways, and surface parking areas. Only motor vehicles are allowed in parking garages. In the interest of safety, operating or riding hoverboards, longboards, rollerblades, scooters, Segways, skateboards, etc., is prohibited in Collin College parking garages and/or buildings, unless authorized by the Accommodations at Collin College for Equal Support Services (ACCESS) Office or Human Resources Department as a reasonable accommodation required by the [Americans with Disabilities Act of 1990 \(ADA\)](#), [Americans with Disabilities Act and Amendments Act of 2008 \(ADAAA\)](#); or other federal law. Pedestrians have the right of way on Collin College sidewalks.

### 5.2 Weapons on Campus

#### Respect for the Right to Bear Arms

Collin College supports every citizen's Constitutional right to bear arms and recognizes the vital role of responsible firearm ownership in ensuring individual liberty and public safety. In alignment with state and federal law, [Collin College permits](#) authorized individuals to carry firearms under clearly defined conditions that prioritize both personal rights and campus security.

#### Constitutional Carry and Peace Officers

Constitutional Carry is permitted for active Peace Officers—including those employed by Federal, State, County, and Local law enforcement agencies—who are licensed in accordance

with applicable laws. These officers may carry firearms on Collin College property consistent with their law enforcement duties and legal authority.

#### School Marshal Program

The Collin College Board of Trustees approved a [local policy](#) at its December 11, 2018, meeting that authorized the development of an on-campus school marshal program. First enacted during the 83rd session of the Texas Legislature in 2013, the Texas school marshal program was expanded in 2015 to include public two-year colleges. Collin College is the first community college district in Texas to authorize such a program. According to the policy adopted by the trustees, school marshals at Collin College will only be authorized to act “to prevent or abate the commission of an offense that threatens serious bodily injury or death of students, faculty, staff, or visitors on school premises.” This policy provides for specialized training for those who are most likely already license holders and who wish to be considered for the program, which we believe will lead to a safer environment on our campuses.” Applicants for the school marshal program will be required to have a current License to Carry (LTC) from the state and meet Texas Commission on Law Enforcement (TCOLE) requirements, including psychological and extensive background checks. Candidates must also complete a training course of at least 80 hours. Collin College's school marshal program trains full-time employees who have been vetted and approved by the board to be able to respond in the event



## Section 5: Campus Security and Crime Prevention Programs

---

of an active shooter or other life-threatening incident occurring on college property. Anyone interested in becoming a School Marshal may contact Lt Don Mewbourn at 972-881-5643 or [dmewbourn@collin.edu](mailto:dmewbourn@collin.edu).

For more information about this program, please see: [www.collin.edu/news/2024/07/20240701connection\\_schoolmarshal](http://www.collin.edu/news/2024/07/20240701connection_schoolmarshal).



### License to Carry (LTC) Holders

In accordance with [Texas Government Code §411.2031](#), individuals who possess a valid License to Carry a handgun (LTC), issued by the Texas Department of Public Safety or a reciprocal licensing authority recognized by the State of Texas, may legally carry a **concealed handgun** on or about their person while on Collin College property. Open carry is not permitted. The College District President, in consultation with students, faculty, and staff, has adopted rules that balance public safety with the rights of LTC holders in the unique higher education environment.

### Legal Limitations and Prohibited Carry

While Collin College honors and upholds legal firearm possession, a citizen's right to open carry is prohibited on all Collin College campuses under [Texas Penal Code §§30.05, 30.06, and 30.07](#).

Additionally, possession or use of **prohibited weapons**—as defined in Board policies [CHF \(LOCAL\)](#), [DH \(LOCAL\)](#), and [FLB \(LOCAL\)](#)—is not allowed on any Collin College property or during college-sponsored activities, unless specifically permitted as part of a college-approved and supervised activity, or otherwise authorized by law.

To view the Board policies associated with this section, go to [pol.tasb.org/PolicyOnline/PolicyDetails?key=304](http://pol.tasb.org/PolicyOnline/PolicyDetails?key=304)

No violation of this policy occurs when the use, possession, or display of an otherwise prohibited weapon takes place as part of a Collin College-approved activity supervised by proper authorities, or in accordance with law.

### LTC Procedures

After consulting with the students, staff, and faculty of Collin College regarding the nature of the student population, specific safety considerations; and the uniqueness of the Collin College environment, the College District President has established the following rules regarding the carrying of concealed handguns by license holders on the campuses of Collin College:

- Only individuals with a valid License to Carry a Handgun (LTC) issued by the [Texas Department of Public Safety \(TxDPS\)](#) under

## Section 5: Campus Security and Crime Prevention Programs

---

[Texas Government Code, Chapter 411, Subchapter H](#), as well as LTC licenses\* from other states, the validity of which are recognized by the State of Texas, may carry a concealed handgun on or about their person on the property of Collin College. *\*Validly issued LTC licenses are collectively referred to hereinafter as "LTC."*

- Individuals who do not possess a valid LTC are prohibited from possessing a handgun on Collin College campuses.
- Collin College prohibits the use, possession, or display of any illegal knife, club, or prohibited weapons, as defined by the [Texas Penal Code](#) and described in Board policy CHF (LEGAL), on Collin College property or at a Collin College-sponsored or -related activity, unless written authorization is granted in advance by the College District President or designee. For more information, see Board policy CHF (LEGAL) located at [pol.tasb.org/PolicyOnline/SearchResults/?key=304&query=disciplinary+procedures](http://pol.tasb.org/PolicyOnline/SearchResults/?key=304&query=disciplinary+procedures).
- While on Collin College campuses, it is the responsibility of the LTC holder to conceal the handgun so that it is not partially or wholly visible to another person.
- While on a Collin College campus, an LTC holder who is in possession of a handgun must keep that handgun on or about their person or in a locked vehicle, as permitted by law.
- Other than a handgun owned by a qualified resident of Collin College Student Housing as defined herein, handguns may not be stored overnight on Collin College campuses, unless in a locked, privately owned or leased motor vehicle, as permitted by law.
- Possession of a hand gun on Collin College property while intoxicated, under the influence of illegal drugs, or while taking prescription drugs that impair judgment or physical abilities is prohibited.
- This policy applies to persons traveling in Collin College-owned vehicles. However, the policies of the owner of the vehicle apply when private or commercial transportation is used for Collin College travel.
- This policy applies to all students, staff, faculty, and visitors of Collin College, except for law enforcement officers licensed by a state of the United States or a federal agency and school marshals licensed by the State of Texas and appointed by the Collin College Board of Trustees (Board).
- Open carry of a handgun on a campus of Collin College is restricted to law enforcement officers licensed by a federal, state, or local law enforcement agency.
- Students and employees of Collin College, with the exception of police officers employed by Collin College, will not inquire as to whether any person is carrying a concealed weapon or possesses an LTC.
- The storage or transportation of a firearm or ammunition is allowed by Collin College students, faculty, staff, and employees if the individual is authorized to such

## Section 5: Campus Security and Crime Prevention Programs

---

possession in a locked, privately owned or leased motor vehicle on those specific premises allowed by law and described in Board policy CHF (LEGAL). For more information, see Board policy CHF (LEGAL) located at <https://pol.tasb.org/PolicyOnline/PolicyDetails?key=304&code=CHF#legalTabContent>.

### LTC On-Campus Student Housing

A resident with an LTC may only carry or store a concealed handgun in campus housing as established in this policy. Any time a handgun in a campus housing facility is not in the immediate care, custody, or control of the owner, that handgun must be stored in a locked, personal vehicle or within a locked gun safe in the resident's room. No gun storage will be provided by Collin College. This policy applies to all residents as well as live-in staff in any campus facility designed for housing or overnight stay.

#### Residents

An LTC license holder who resides in campus housing in which all the residents of the unit are age 21 or older may carry a concealed handgun into campus housing and may store the weapon in their assigned residential room. An exception to the age 21 requirement is a person who is at least 18 years of age but not yet 21 years of age who:

- Is a member or veteran of the United States armed forces, including a member or veteran of the reserves or national guard;
- Was discharged under honorable conditions, if discharged from the United States armed

forces, reserves, or national guard; and 3. Meets the other eligibility requirements for an LTC except for the minimum age required by federal law to purchase a handgun.

A resident who brings a concealed handgun into campus housing pursuant to this policy must carry the weapon on their person at all times or store it in their assigned room within a locked gun safe.

A resident may not intentionally or knowingly display a handgun in plain view of another person in campus housing except as necessary to properly store and secure the weapon within a gun safe in their assigned residential room.

A student who is assigned to a residential room in campus housing where a firearm is stored and is concerned about their well-being may request a transfer to another residential room through the regular housing process with no penalty.

#### Non-Residents

An LTC license holder who does not reside in campus housing may carry a concealed handgun into campus housing. The handgun must be carried on or about the nonresident's person at all times and may not be stored in a campus housing room.

### Responsibility for Personal Injury or Damage

A resident or non-resident whose possession, use, or storage of a handgun results in personal injury or property damage is personally liable for the injury or damage.



## Section 5: Campus Security and Crime Prevention Programs

---

### Requirements for Proper Storage

When not carried on or about a person, handguns must be in a locked personal vehicle or a locked gun safe that meets Collin College's following requirements:

- Be large enough to fully contain the firearm(s) placed in it and provide for secure storage
- Have exterior walls constructed of a minimum 16-gauge steel
- Have a high-strength locking system consisting of a mechanical or electronic combination or biometric lock, and not a key lock
- Be certified and listed as meeting Underwriters Laboratories Residential Security Container rating standards by a Nationally Recognized Testing Laboratory (NRTL).

Compliance with storage and security requirements are part of the residence inspection process, as outlined in the current Collin College Resident Handbook located on Collin College's website at [www.collin.edu/studenthousing](http://www.collin.edu/studenthousing).

An exception is authorized for the limited purpose of honor guards who carry ceremonial swords at a Collin College sponsored event (e.g., Military Ball). The possession or use of articles not generally considered to be weapons may be prohibited when the College District President or designee determines that a danger exists for any student, Collin College employee, or Collin College property by virtue of possession or use. Possession of other weapons on Collin College campuses is grounds for immediate disciplinary action and possible prosecution for violations of state law.

### Exclusion Zones

Possession of a handgun is prohibited on Collin College campuses in the following locations by any person except law enforcement officers licensed by a state of the United States or a federal agency. These locations will be appropriately identified by signage as specified under [Sections 30.06](#) and [30.07](#) of the [Texas Penal Code](#):

- Child care facilities.
- Polling locations.
- In the room or rooms where a meeting of a governmental entity is held, and if the meeting is an open meeting subject to [Chapter 551, Government Code](#); and notice as required by that chapter is provided.
- High-hazard laboratories and health science education facilities where the presence of high hazard materials or operations creates a significant risk of catastrophic harm due to a negligent discharge.
- Designated meeting room(s) at each campus in Student and Enrollment Services that can be used, as needed, for disciplinary meetings or counseling meetings.
- Facilities where professional, high school, college sporting, or interscholastic events are in progress as prohibited by [Texas Penal Code, Section 46.035\(b\)\(2\)](#).
- Locker and dressing rooms where individuals change clothes, including those at athletic, theatre, and health science education facilities.
- Any location or facility of Collin College, as

## Section 5: Campus Security and Crime Prevention Programs

---

directed or approved by the College District President as necessary for campus safety, where effective notice on a temporary basis pursuant to [Sections 30.06](#) and [30.07, Texas Penal Code](#), has been given by the required signage. An example might include a Collin College facility where alcohol is being served for a special event.

A violation of these specific prohibitions is considered an offense under Section 46.035 (a-3), Texas Penal Code.

### Other Weapons and Devices Prohibited

All other weapons are strictly prohibited for students, staff, faculty, and visitors on Collin College property or at any Collin College-sponsored or -related activity, including, but not limited to, long guns, location-restricted knives, clubs, knuckle devices, firearm silencers, explosives, fireworks of any kind, incendiary devices, instruments designed to expel a projectile with the use of pressurized air, such as a BB gun, martial arts throwing stars, or any weapons described in Board policy CHF (LEGAL). For more information, see Board policy CHF (LEGAL) located at [pol.tasb.org/PolicyOnline/PolicyDetails?key=304](http://pol.tasb.org/PolicyOnline/PolicyDetails?key=304).

### Violations

Violations of this policy should be reported immediately to the Collin College Police Department at 972.578.5555. Such violations may result in disciplinary action by Collin College up to and including criminal prosecution for violation of the Texas Penal Code.

Employees and students found to be in violation

of this policy will be subject to disciplinary action. For more information, see Board policies DH (LOCAL), FM (LOCAL), and FMA (LOCAL) located at [pol.tasb.org/PolicyOnline/SearchResults/?key=304&query=disciplinary+procedures](http://pol.tasb.org/PolicyOnline/SearchResults/?key=304&query=disciplinary+procedures) and Chapter 13: Student Disciplinary Procedures in the Student Code of Conduct located in the current Collin College Student Handbook available on Collin College's website at [www.collin.edu/studentresources/deanofstudents/studenthandbook/](http://www.collin.edu/studentresources/deanofstudents/studenthandbook/).

### Reporting

Not later than September 1 of even-numbered years, Collin College will submit a report to the Texas State Legislature and to the standing committees of the legislature with jurisdiction over the implementation and continuation of [Section 411.2031, Texas Government Code](#) that:

- Describes the Collin College rules, regulations, or other provisions regarding the carrying of concealed handguns on the campuses of Collin College; and
- Explains the reasons the institution has established these provisions.

### Safety Committee

The College District President will appoint a standing committee, the Collin College Safety Committee, that is chaired by the executive vice president or College District President's designee and includes representatives from the administration, faculty, staff, and student government.

## Section 5: Campus Security and Crime Prevention Programs

---

The Safety Committee will be charged with meeting as needed, but at least once each fall and spring semester, to review Collin College's weapons policy, any new legislation and legal decisions relating to this issue, and the effectiveness of the implementation of Collin College's policy. Advisory notes and recommendations from the Safety Committee will be forwarded for review and consideration by the Executive Leadership Team, College District President, and Board of Trustees (Board), as necessary.

To contact Collin College's Safety Committee directly, email [safety@collin.edu](mailto:safety@collin.edu).

### 5.3 Security Awareness and Crime Prevention Programs

Collin College offers a variety of programs to inform students and employees about campus security procedures and practices.

These programs are designed to encourage students and employees to be responsible for their own security and the security of others.

Presentations are held during new student orientation, employee onboarding, and throughout the year via scheduled events coordinated by the Collin College Police Department.

[www.collin.edu/campuspolice](http://www.collin.edu/campuspolice)

### 5.4 Examples of Programs

Programs may include topics such as personal safety, situational awareness, crime prevention strategies, and emergency response protocols.

Additional outreach may include educational tables, safety presentations, and resource distribution during national crime prevention and safety awareness campaigns.





## Section 6: Crime Prevention Education

---

### 6.1 Crime Prevention, Safety, and Security Awareness Programs

Periodically throughout the academic year, the Collin College Police Department, in cooperation with other Collin College departments, presents crime prevention and awareness sessions on topics such as alcohol and drug abuse, personal safety, sexual assault, theft, and vandalism. Collin College Police Department officers facilitate these programs for Collin College students, faculty, staff, student organizations, and community organizations.

Information is also disseminated to Collin College students, faculty, and staff through the following media.

- Articles on Collin College's online college news site, Collin College Newsroom [www.collin.edu/news](http://www.collin.edu/news)
- Articles in Collin College's bimonthly electronic newsletter, Cougar News, which is emailed to all students, faculty, and staff
- Crime prevention awareness packets, displays, and videos
- Security alert posters
- The Collin College Police Department's website [www.collin.edu/campuspolice](http://www.collin.edu/campuspolice)

Crime prevention, safety, and security awareness programs are offered on a continual basis. A common theme of all awareness and crime prevention programs is to encourage students and employees to be aware of their responsibility for their own security and the security of others.

### 6.2 Alcohol and Substance Abuse Prevention and Intervention Programs

Collin College has developed an alcohol and substance abuse prevention and intervention program to educate, empower, and provide resources that address the use and abuse of alcohol and controlled substances by students and employees. This program provides services related to drug use and abuse, including dissemination of informational materials, educational programs, counseling services, referrals; and college disciplinary actions.

More information about these programs can be found on the Collin College Counseling website here: [www.collin.edu/studentresources/counseling](http://www.collin.edu/studentresources/counseling).

### 6.3 Programs to Promote Awareness and Prevention of Dating Violence, Domestic Violence, Sexual Assault, and Stalking

In order to comply with the federal government's mandated training requirement under the various Collin College committees, departments, initiatives, and offices present programs and training sessions throughout each academic year to promote prohibition, prevention; and awareness of dating violence, domestic violence, sexual assault, and stalking. These programs are organized into "primary prevention and awareness programs" and "ongoing prevention and awareness programs" that are described below and offered on a continual basis.

## Section 6: Crime Prevention Education

### Prevention and Awareness Programs

Collin College provides prevention and awareness programs on dating violence, domestic violence, sexual assault, stalking; and other relevant topics to all incoming students, faculty, and staff. All of these programs include, but are not limited to, information on the following topics:

- Collin College's and the State of Texas' definitions of dating violence, domestic violence, sexual assault, stalking, and consent to sexual activity

- Personal safety
- Safe and positive options for bystander intervention
- The importance of preserving evidence.
- Risk reduction strategies
- Reporting options

For more information about Collin College's prevention and awareness programs, please see [www.collin.edu/titleix/preventionandawareness](http://www.collin.edu/titleix/preventionandawareness).



## Section 7: Policies Regarding Dating Violence, Domestic Violence, Sexual Assault, and Stalking

Collin College prohibits dating violence, domestic violence, sexual assault, and stalking as defined by federal and state law. These offenses are violations of law and Collin College Board policies FA, FFDA (LEGAL), DAA (LEGAL), and DIAA (LEGAL) which can be found at [pol.tasb.org/PolicyOnline/SearchResults/?key=304&query=ffda](http://pol.tasb.org/PolicyOnline/SearchResults/?key=304&query=ffda).

Collin College addresses complaints of sexual harassment and sexual violence through the procedures outlined at [www.collin.edu/titleix](http://www.collin.edu/titleix). These documents outline institutional response protocols, investigation procedures, and grievance processes in accordance with [Title IX of the Education Amendments of 1972](#).

Definitions under Clery and Title IX can be found at the beginning of this [document](#).

Collin College definitions of prohibited conduct can be found here: [www.collin.edu/titleix/documents/Definitions\\_of\\_Prohibited\\_Conduct.pdf](http://www.collin.edu/titleix/documents/Definitions_of_Prohibited_Conduct.pdf).

Collin College provides written notification to students and employees about rights, options, and available resources for support, including counseling, health, mental health, victim advocacy, legal assistance, and changes to academic, living, transportation, or working situations regardless of whether the crime is reported to law enforcement.

The college issues timely warnings and emergency notifications as appropriate, maintains compliance with the Clery Act, and ensures transparency in its procedures.

Bystander intervention and risk reduction education are offered through annual training and awareness programs coordinated by the Collin College Police Department and Student and Enrollment Services.

For a complete description of the rights and procedures, students and employees are encouraged to review the Title IX Procedures Document and the Title IX Handbook available at [www.collin.edu/titleix/](http://www.collin.edu/titleix/).





## Section 8: Emergency Response and Evacuation Procedures

---

### **Emergency Management at Collin College**

The Office of Emergency Management directs the development, implementation, and maintenance of Collin College's emergency management program. The Office maintains and updates the emergency management plan that provides the framework for the structure of the College's response and resources during an emergency or incident affecting the campus community. This plan is flexible to accommodate various contingencies.

The priorities of the plan include:

- Life safety, infrastructure integrity, and environmental protection
- Coordination among departments for planning, testing, and exercises
- Cooperation with local, state, and federal emergency agencies

### **Evacuation and Relocation**

In the event of an alarm, complete evacuation is recommended. Departmental evacuation plans detail specific procedures. Transportation for displaced individuals will be coordinated by the Collin College Police Department and Office of Emergency Management.

Temporary shelters may include athletic facilities or other campus buildings. Assignments for critical roles are determined based on situational needs. A summary of emergency procedures is at [www.collin.edu/campuspolice/OEM](http://www.collin.edu/campuspolice/OEM).

### **Emergency Management Drills, Exercises, and Trainings**

Drills, exercises, and trainings are conducted regularly to test emergency procedures. These include lockdown/active assailant drills, fire/

evacuation drills, and shelter/severe weather drills. Student housing conducts two fire drills per semester, including one at night. Child Development Lab conducts monthly fire drills and quarterly shelter and lockdown drills.

All exercises are documented and evaluated with After Action Reports maintained by the Office of Emergency Management.

### **Emergency Notification Procedures**

Collin College uses a multi-tiered emergency notification system to quickly inform the community of significant emergencies. Notifications are issued immediately upon confirmation of an emergency threatening health or safety.

Examples include weather emergencies, active threats, chemical spills, or other health risks. Notifications may be triggered by reports to the College Police Department or emergency managers.

### **Determining the Content and Recipients of Notifications**

Notifications include specific threat details and safety instructions. The College determines affected campus segments based on the emergency's scope. Notification methods include CougarAlerts, the College website, emails, and other appropriate systems.

### **Procedures for Community and External Notification**

Information may also be shared with the broader community through local media and external partners as appropriate. The College encourages community members to report any information warranting emergency notification to the Collin College Police Department.

## Section 9: Missing Person Notification Policy and Procedures

---

The [Clery Act](#) requires institutions that maintain on-campus student housing facilities to establish a missing student notification policy and related procedures.

When it is determined that a student resident is missing from Collin College Student Housing located on the Plano Campus, the Director of Student Housing Operations, Collin College Police Department, and District Dean of Students Office, in collaboration with local law enforcement, will follow the Missing Student Notification Policy and procedures as outlined in the current [Collin College Resident Handbook](#).

Collin College provides all student residents the opportunity to register one or more individuals to be contacted if they are determined to be missing. This information is collected via the Missing Student Contact Information Form, which is distributed annually and when students sign the housing lease agreement. Forms are submitted online and stored confidentially with the District Dean of Students Office.

If a student resident is determined missing by the Collin College Police Department or a local law enforcement agency, Collin College will notify the designated missing person contact(s) within 24 hours. If the student is under 18 and not emancipated, the college will also notify the custodial parent or guardian.

Any person who believes a student resident is missing for 24 hours should report to:

- **Collin College Police Department:**  
972.578.5555
- **Plano Police Department:** 911 or  
972.424.5678
- **Director of Student Housing Operations:**  
972.881.5151
- **District Dean of Students Office:**  
972.881.5604

Upon receiving a report, the responding officer will investigate and notify campus administrators. The college will attempt to locate the student by contacting professors, checking class attendance, and searching local hospitals. If the student is not found, notifications will be made to the contacts and law enforcement within 24 hours.

If the student is later located, all appropriate parties will be informed. If not, the college will continue coordinated investigative efforts. False reports of missing persons are subject to penalties under [Texas Penal Code Section 42.06](#).

## Section 10: Monitoring and Recording Criminal Activity at Non-Campus Locations

---

Collin College does not operate off-campus housing or off-campus student organization facilities.

As such, the institution does not monitor or record through local police agencies criminal activity by students at non-campus locations of student organizations officially recognized by the institution.

Any information about crimes involving students that occur off-campus and that is shared with the college by local police may be evaluated for campus-wide safety concerns and included in required disclosures when applicable.

## Section 11: Alcohol Policy and Enforcement

---

Collin College prohibits the unlawful possession, use, or distribution of alcoholic beverages on its campuses or as part of any of its activities.

The possession, sale, or furnishing of alcohol is governed by Texas state law and is strictly enforced by the Collin College Police Department.

Underage possession or consumption of alcohol is a violation of both state law and Collin College policy and may result in criminal prosecution and college disciplinary action.

Collin College enforces state underage drinking laws through citations, arrests, and referrals for disciplinary action when violations occur.

For more information please see Board policies [DHA \(LEGAL\)](#), [DHA \(LOCAL\)](#), [FLBE \(LEGAL\)](#), and [FLBE \(LOCAL\)](#).



## Section 12: Drug Policy and Enforcement

---

Collin College prohibits the unlawful possession, use, or distribution of illicit drugs on its campuses or as part of any of its activities.

The possession, sale, manufacture, or distribution of controlled substances is illegal under both state and federal laws and is strictly enforced by the Collin College Police Department.

Violations of drug laws may result in criminal prosecution and college disciplinary action, up to and including expulsion or termination of employment.

Collin College enforces all applicable federal and state drug laws and maintains compliance with the Drug-Free Schools and Communities Act (DFSCA). For more information please visit [Collin College's DFSCA page](#), or the [Board policy manual](#).

## Section 13: Sex Offender Registry Information

---

To view the Board policies associated with this section, go to [pol.tasb.org/PolicyOnline/PolicyDetails?key=304&code=FL](http://pol.tasb.org/PolicyOnline/PolicyDetails?key=304&code=FL).

Information provided by the State of Texas concerning registered sex offenders who are on campus may be obtained from the Collin College Police Department.

In compliance with the [Campus Sex Crimes Prevention Act \(Section 1601 of Public Law 106-386\)](#) and the [Jacob Wetterling Crimes Against Children and Sexually Violent Offender Registration Act](#), a convicted sex offender who is a student, employee, or an individual who frequents Collin College must register with the Collin College Police Department. In accordance with Board policy [pol.tasb.org/PolicyOnline/PolicyDetails?key=304&code=FL#legalTabContent](http://pol.tasb.org/PolicyOnline/PolicyDetails?key=304&code=FL#legalTabContent), a student who is a convicted sex offender

must register with the Collin College Police Department no later than the seventh day after the date on which the person begins to attend Collin College. Additionally, a student who is a convicted sex offender must notify the Collin College Police Department no later than the seventh day after the date of termination of the person's status as a student at Collin College.

To register, a student, employee, or an individual who frequents Collin College must schedule an appointment with a Collin College Police Department administrator at 972.578.5555. For more information, contact the Collin College Police Department at 972.578.5555 or go to the Texas Department of Public Safety's (TxDPS) Texas Public Sex Offender Registry available on the web at [publicsite.dps.texas.gov/SexOffenderRegistry](http://publicsite.dps.texas.gov/SexOffenderRegistry).

# Section 14: Annual Fire Safety Report for Collin College Student Housing on the Plano Campus

## Policy for Publishing the Annual Fire Safety Report

Collin College publishes this Annual Fire Safety Report as part of its [Jeanne Clery Disclosure of Campus Security Policy and Campus Crime Statistics Act, 20 U.S.C. § 1092\(f\) \(Clery Act\)](#) compliance document. This report contains information on fire protection systems, fire safety practices, and fire safety standards for Collin College Student Housing located on the Plano Campus. Additionally, this report includes fire statistics for the three (3) previous calendar years for Collin College Student Housing concerning the number of fires, cause of each fire, number of injuries and deaths related to each fire, and value of the property damage caused by each fire.

As required by the Clery Act, fire statistics for Collin College Student Housing for the three (3) previous calendar years are located in [Appendix C](#).

## Definitions

In accordance with the [Clery Act](#), Collin College uses the following definitions when preparing this Annual Fire Safety Report.

- **On-Campus Student Housing or Residential Facility:** Any student housing facility that is owned or controlled by the institution, or is located on property that is owned or controlled by the institution, and is within the reasonably contiguous geographic area that makes up the campus is considered an on-campus student housing or residential facility.

- **Fire:** Any instance of open flame or other burning in a place not intended to contain the burning or in an uncontrolled manner.
- **Fire Drill:** A supervised practice of a mandatory evacuation of a building for a fire.

## Collin College Student Housing

Collin College Student Housing is a 128-unit complex located at 5800 Jupiter Road, Plano, Texas, 75074, and is the only residential facility located on any Collin College campus. Collin College Student Housing is on the west side of the Plano Campus. Additional information about Collin College Student Housing is located on Collin College's website at [www.collin.edu/studenthousing](http://www.collin.edu/studenthousing).

## Collin College Student Housing Policies

Policies for safe occupation of the Collin College Student Housing residential units, including, but not limited to, standards for community living, prohibited items, portable electrical appliances, smoking, and open flames are governed by the current Collin College Student Housing Terms and Conditions (i.e., lease agreement), Collin College Resident Handbook located on Collin College's website at [www.collin.edu/studenthousing](http://www.collin.edu/studenthousing), and Student Code of Conduct located in the current Collin College Student Handbook available on Collin College's website at [www.collin.edu/studentresources/deanofstudents/studenthandbook](http://www.collin.edu/studentresources/deanofstudents/studenthandbook).

The current [Collin College Resident Handbook](#) includes the information listed in the sections below. Please refer to the Resident Handbook for all relevant policies related to fire and

# Section 14: Annual Fire Safety Report for Collin College Student Housing on the Plano Campus

---

general safety at Collin College Student Housing.

## **Appliances**

Electrical appliances should display the “Underwriters Laboratory” (UL) approval. They must not disrupt electrical circuits or disturb other residents. For a full list of approved appliances (and appliances that are not permitted in Collin College Student Housing) please check the most recently published [Resident Handbook](#).

## **Candles and Open Flames**

Candles and open flames are not allowed in Collin College Student Housing. This includes, but is not limited to, incense, scented wax warmers (except those warmed by a light bulb), oil lamps, wax sculptures, and other devices that use an open flame.

## **Fire Drills**

Fire Drills will be conducted twice a semester. One (1) will be an announced fire drill and one (1) will be an unannounced fire drill. Residents are expected to exit their unit upon hearing the sound of the fire alarm, come down to the first floor and follow the directions of the housing staff.

## **Fireworks**

Possession of fireworks or any explosive device(s) is prohibited by city ordinance. Possession will result in disciplinary action and damage assessments to the violator(s) or the student resident(s).

## **Grills and Outdoor Cooking Appliances**

There are charcoal grills located at Collin College Student Housing community for student residents’ use. Personal grills and other outdoor

cooking devices are not allowed anywhere in Collin College Student Housing, including balconies and patios.

There are charcoal grills located at Collin College Student Housing community for student residents’ use. Personal grills and other outdoor cooking devices are not allowed anywhere in Collin College Student Housing, including balconies and patios.

## **Health, Safety, and Preventive Maintenance**

The director of student housing or designee will enter apartments and rooms to perform inspections, ensure health and safety standards are being met, and identify potential hazards. Student residents will receive advance notification and will be expected to cooperate. Failure to comply will result in disciplinary action. Inspections will include but are not limited to:

- Safety Equipment:
  - » Smoke detectors
  - » Sprinkler heads
  - » Other security features (e.g., self-closing door hinges, window and door locks)
- Fire Hazards:
  - » Frayed or overloaded electrical wiring, including multiple cords or power strips plugged together (i.e., “daisy-chained”)
  - » Stacks of newspapers or magazines
  - » Covered heaters
  - » Buildup of grease in ovens or on stovetops;
  - » Storage of gasoline, other flammable materials, or gas-powered vehicle(s) in unit



# Section 14: Annual Fire Safety Report for Collin College Student Housing on the Plano Campus

---

- Health Hazards:
  - » Improperly stored or disposed of garbage and food
  - » Unclean bathtub or shower surfaces
  - » Improperly disposed of aluminum cans, glass, bottles, and paper bags
  - » Obstructions blocking interior safety equipment or ease of ingress and egress
  - » Unreported water intrusion or leaks
  - » Pest control issues
  - » Prohibited pets
  - » Potential illegal occupancy
  - » Excessively dirty or cluttered rooms
  - » Any other violations of the Collin College Student Housing Terms and Conditions

Corrective warning notices will be given in writing within a reasonable time following the inspection. Any violations that mandate an automatic fine will also be communicated and charged to the resident student's account. Damages to the unit may be cause for disciplinary action through the District Dean of Students Office, in accordance with the current [Student Code of Conduct](#).

## Keys and Locks

Apartment keys are issued during the check-in process. Student residents should carry their apartment keys at all times and never leave their keys unattended. For safety purposes, student residents should not place any identifying markers on their key rings. Making, causing to be made; or possessing any key for a Collin College facility without proper authorization is strictly prohibited, and may lead to disciplinary

action through the District Dean of Students Office, in accordance with the current [Student Code of Conduct](#).

If a key is lost, a new key will be issued, and the student resident will be charged a \$75 replacement fee for each key that is lost. Lost or broken keys must be immediately reported to the director of student housing or designee. Student residents may not loan or give their apartment key to any individual in order to give them access to Collin College Student Housing or the student resident's apartment.

Jeopardizing the security of Collin College Student Housing by interfering with entrance doors or tampering with a lock is a serious violation. Student residents who tamper with room door locks (e.g., pin locking) will be assessed a \$150 charge plus any fee(s) for resulting damage. Additionally, tampering with locks will lead to disciplinary action through the District Dean of Students Office, in accordance with the current [Student Code of Conduct](#).

## Lockouts

Student residents who lose or temporarily misplace their keys should immediately report the issue to a Collin College Student Housing staff member in the office. If a student resident is locked out after office hours, they should contact the director of residence life coordinator on call at 972.881.5151.

## Maintenance

Requests for service may be placed by phone at 972.881.5151, in person at the Collin College Student Housing Office, or online via the

## Section 14: Annual Fire Safety Report for Collin College Student Housing on the Plano Campus

---

StarRez housing portal. Requests for any security-related matters must be submitted in writing, except in the case of life or building safety emergencies. Call the Collin College Student Housing Office at 972.881.5151 to report a maintenance emergency. Do not submit emergency maintenance issues online.

Student residents must promptly notify the director of student housing or designee of water leaks, mold, electrical problems, malfunctioning lights, broken or missing locks or latches, and other conditions that pose a hazard to property, health, or safety. Failure to do so may cause the student resident to be liable for any damage caused by the delayed or non-reporting of such a problem in the student resident's apartment or bedroom.

### **Maintenance Emergencies**

Call the Collin College Student Housing Office at 972.881.5151 to report a maintenance emergency. The on-call technician will be notified and respond as quickly as possible. When calling to report a maintenance emergency, be as detailed as possible and leave current contact information (e.g., cellphone, home phone). The correct contact information is critical to ensure a quick and effective response.

### **Patios and Balconies**

Student residents must keep their patios and balconies neat and clean. These areas may not be used for the storage of automobile tires, firewood, other unsightly heavy items, or to dry clothes. No furniture may be placed on any patio or balcony. Pursuant to the City of Plano Fire Code, the use and storage of

any outdoor cooking grill is prohibited on the patios and balconies. No unsecured plants are permitted on the ledges or protruding from the railings. Motorbikes and mopeds are not allowed. Smoking or using any tobacco product or electronic smoking device and the disposal of tobacco is prohibited everywhere on Collin College property, including Collin College Student Housing apartment patios and balconies.

### **Reporting a Crime or Emergency to the Collin College Police Department**

To report a crime or an emergency on a Collin College campus, dial extension 5555 from any Collin College phone or dial 972.578.5555 from any phone outside the Collin College system. In a medical emergency, dial 911, and then dial extension 5555 or 972.578.5555.

Collin College Police Department officers are available 24 hours a day, 365 days a year to answer calls. If assistance is required from another police department, Collin College Police Department officers will contact the appropriate agency. If a sexual assault should occur, responding officers will inform the victim of the support services available.

If a fire occurs in a Collin College building, the individual who discovers it should immediately notify the Collin College Police Department at 972.578.5555 or dial 911. The Collin College Police Department will initiate a response and can summon the local fire department quickly through their communication links, if necessary. If a member of the Collin College community finds evidence of a fire that has been extinguished and is unsure whether the Collin College

# Section 14: Annual Fire Safety Report for Collin College Student Housing on the Plano Campus

---

Police Department has already responded, he or she should immediately notify the Collin College Police Department so an officer can investigate and document the incident.

For any non-emergency complaint or concern, the Collin College Police Department can be contacted via email at [ccccdpublicsafety@collin.edu](mailto:ccccdpublicsafety@collin.edu).

## **Reporting a Violation of Student Housing Policies and Procedures**

Everyone in Collin College Student Housing has the responsibility of maintaining the safety and well-being of the community, maintaining the condition of the facilities, and taking initiative and action when there is a violation of community standards. In the presence of a rule violation, student residents may attempt to stop the violation, contact the director of student housing or designee, and/or immediately remove themselves from the situation and vicinity of the violation. Student residents present at the scene of a rule violation, will be included in the documentation of the incident and may also be held accountable for applicable rule violation(s). Concealment of information is also considered a rule violation.

## **Roofs and Ledges**

All building roofs, ledges, and ladders are off limits at all times. Do not climb, sit, or stand on any building roofs or ledges. If a student resident is found on the roof, ledge, or ladder of any Collin College Student Housing facility, they will be referred to the District Dean of Students Office for appropriate disciplinary action, in accordance with the current [Student Code of Conduct](#).

## **Safety**

Campus safety and security is a shared responsibility. Student residents can protect themselves, the community, and their property by taking steps to decrease their exposure to risk. Student residents should always be aware of their physical surroundings and the people around them. Travel with friends at night or use the Collin College Police Department's walking escort services. Keep doors and windows locked, even when inside. Trust your instincts and use common sense to help keep you safe and deter an attacker. Remember, a crime cannot occur if the opportunity for crime is not present!

The Collin College Student Housing community is patrolled by the Collin College Police Department; however, no police department can function effectively without the collaborative assistance of the community it serves. If there is an immediate physical or medical emergency, call 911.

Collin College Student Housing cannot guarantee or ensure your personal safety and security while residing on campus. It is each student resident's responsibility to report acts of mischief or criminal activity in the community to the Collin College Police Department immediately. The provision of safety devices, locks, and Collin College Police Department services does not constitute a guarantee of their effectiveness. Student residents should always exercise caution when on campus and around their housing units.



# Section 14: Annual Fire Safety Report for Collin College Student Housing on the Plano Campus

---

## Security Phone Numbers and Websites

Collin College Police Department: 972.578.5555  
[www.collin.edu/campuspolice](http://www.collin.edu/campuspolice).

Emergencies: 911

## Smoke Detectors

Smoke detectors are tested prior to move-in to ensure they are working properly. Student residents are responsible for ensuring their smoke detectors continue to work properly. Student residents should test the smoke detectors monthly. Contact the director of student housing or designee immediately if a smoke detector starts “chirping” or is not working properly.

Do not disable smoke detectors. Disabling a smoke detector or removing working batteries is a misdemeanor offense and violators are not only subject to fines and disciplinary action, but also legal prosecution and eviction.

## Structural Changes

No structural changes or additions may be made to building exteriors, including apartment front entrances, patios, and balconies. No alterations may be made to the front door or apartment entrance. Student residents may not tamper with existing locks or add additional locks to their units. If there is a problem with a lock or it is not working correctly, the student resident should notify the Director of Student Housing or designee immediately. Front door mats are encouraged, but the Director of Student Housing or designee reserves the right to remove mats that are inappropriate or not designed for outdoor use (e.g., carpet remnants). Colored light bulbs are prohibited in all

exterior features. Extra exterior lighting (e.g., garden lights, patio lights, etc.) is not permitted.

## Fire Safety Systems

Each Collin College Student Housing residential unit is equipped with smoke detectors and sprinkler systems located throughout the unit. The smoke detectors are hardwired to the electrical system and have battery backup. Additionally, fire extinguishers are provided in the kitchens of each residential unit. It is a violation of the law and the Collin College Student Housing Terms and Conditions to remove or tamper with smoke detectors.

Collin College Student Housing facilities are inspected for fire safety annually by municipal fire marshals, in accordance with the relevant City of Plano codes as well as state and federal guidelines. Collin College Student Housing’s fire safety and suppression system is maintained and monitored 24 hours a day, 365 days a year by [Frontline Fire Protection, Inc.](http://Frontline Fire Protection, Inc)

## Policies Regarding Fire Safety Education and Training Programs

Collin College Student Housing has established a comprehensive resident life program, which includes policies regarding fire safety education and training programs. These policies are distributed to all Collin College Student Housing staff and student residents annually. Additionally, they are disseminated to new student residents during the application and leasing process.

The Office of Emergency Management and Collin College Student Housing staff provide a fire safety training program focusing on basic

# Section 14: Annual Fire Safety Report for Collin College Student Housing on the Plano Campus

---

fire safety procedures and evacuation plans specifically developed for Collin College Student Housing. This fire safety training program teaches Collin College Student Housing staff and student residents how to recognize and prevent fire hazards, what actions they should take in the event of a fire or other emergency, and how to respond properly to emergency situations (e.g., assaults, bomb threats, crimes, evacuations, fires, inclement weather, natural disasters). This training also provides evacuation information to all Collin College Student Housing staff and student residents and includes a hands-on component focusing on the proper use of fire extinguishers.

For more information on fire safety education and training programs, contact the Collin College Student Housing Office at 972.881.5151 or the Office of Emergency Management at 972.881.5617 or [emergencymanagement@collin.edu](mailto:emergencymanagement@collin.edu).

## **Procedures for Reporting a Fire**

Any Collin College Student Housing employee or student resident who discovers a fire should immediately sound the fire alarm and dial 911 to report the fire to the Plano Fire-Rescue Department. If a Collin College Student Housing employee or student resident finds evidence of a fire that has been extinguished and is unsure whether the Plano Fire-Rescue Department has already responded, they should immediately dial 911 to report the fire and also notify the director of student housing or designee at 972.881.5151 so the incident can be investigated and documented appropriately.

For purposes of including a fire in the Annual Fire Safety Report and fire statistics, any Collin College Student Housing employee or student resident should report that a fire occurred to a Collin College Police Department officer, sergeant, lieutenant, or the chief of police by phone at 972.578.5555 or in person at the following campus location.

## **Collin College Police Department**

Headquarters: Courtyard Center  
4800 Preston Park Blvd  
Plano, TX 75093

When reporting a fire for purposes of inclusion in the Annual Fire Safety Report, provide as much information as possible about the location, date, time, and cause of the fire as well as any property damage that occurred and any injuries that may have resulted. All fires that occur, including minor fires that do not require an emergency response, must be reported to the Collin College Police Department as soon as possible to ensure inclusion in the Annual Fire Safety Report and fire statistics.

## **Procedures for Evacuation in Case of a Fire**

Never assume a fire alarm is a drill or false alarm. Treat each alarm as if it is the real thing. For your safety and protection, remember: in case of a fire, get out as quickly as possible and leave the firefighting to the professionals. If a fire alarm is activated, Collin College Student Housing student residents and guests must do the following:

- Evacuate the building immediately, move at least 300 feet away from the building, and stay out of fire lanes.

## Section 14: Annual Fire Safety Report for Collin College Student Housing on the Plano Campus

---

- After everyone has exited an area, close the door and leave it unlocked.
- Take personal belongings (e.g., keys, bags) if it is safe to do so.
- Use stairways.
- Remain calm and assist others, if necessary and safe to do so.
- Notify emergency personnel or 911 if there is anyone trapped or injured in the building. Provide the individual's location in the building and any additional information the first responders need to know.
- Upon receiving verbal authorization from a Plano Fire-Rescue Department official, Collin College Police Department officer, or the director of student housing or designee, student residents and their guests should return to their residences quickly and quietly.

If there are questions or concerns, contact the director of student housing or designee at 972.881.5151.



# Appendix A: Campus Maps Showing Clery Act Geography Boundaries

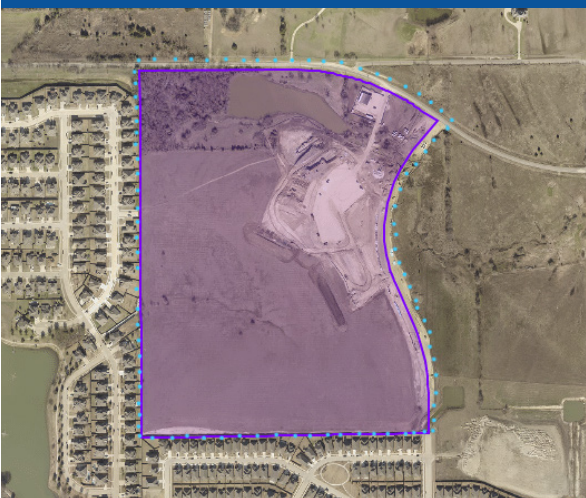
---

## Legend for All Campus Maps

Purple: Collin College Property Border

Blue: Clery Act Reporting Border

### Celina Campus



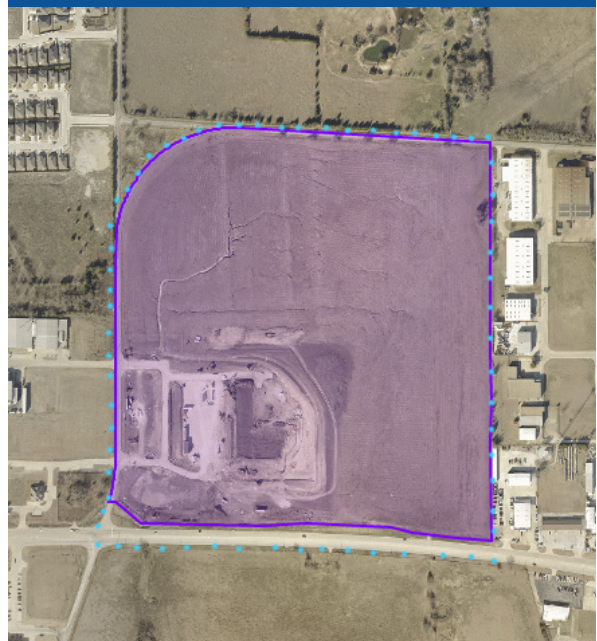
### Collin Higher Education Center



### Courtyard Center



### Farmersville Campus





# Appendix A: Campus Maps Showing Clery Act Geography Boundaries

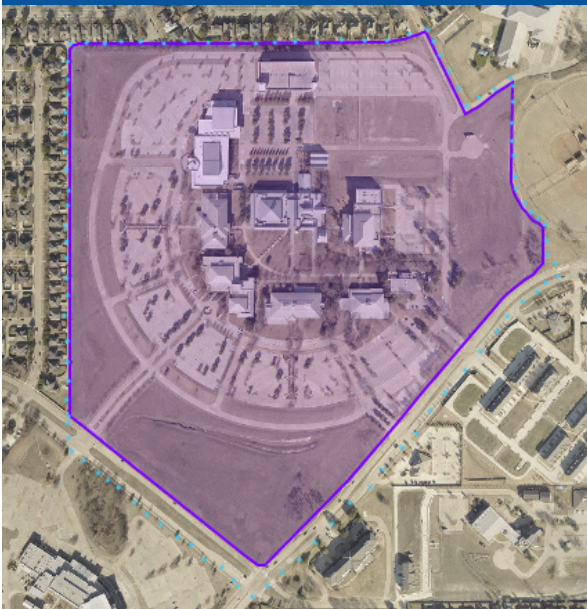
---

## Legend for All Campus Maps

Purple: Collin College Property Border

Blue: Clery Act Reporting Border

### Frisco Campus



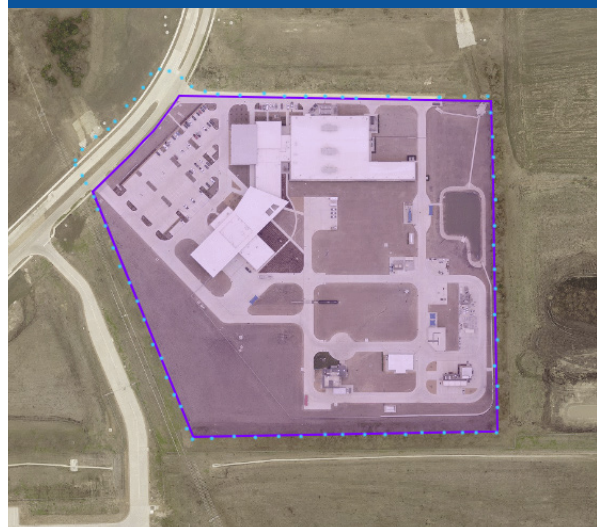
### McKinney Campus



### Plano Campus



### Public Safety Training Center



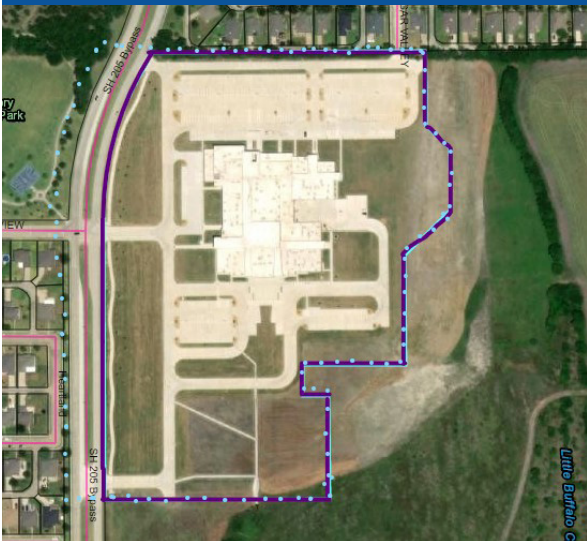
# Appendix A: Campus Maps Showing Clery Act Geography Boundaries

## Legend for All Campus Maps

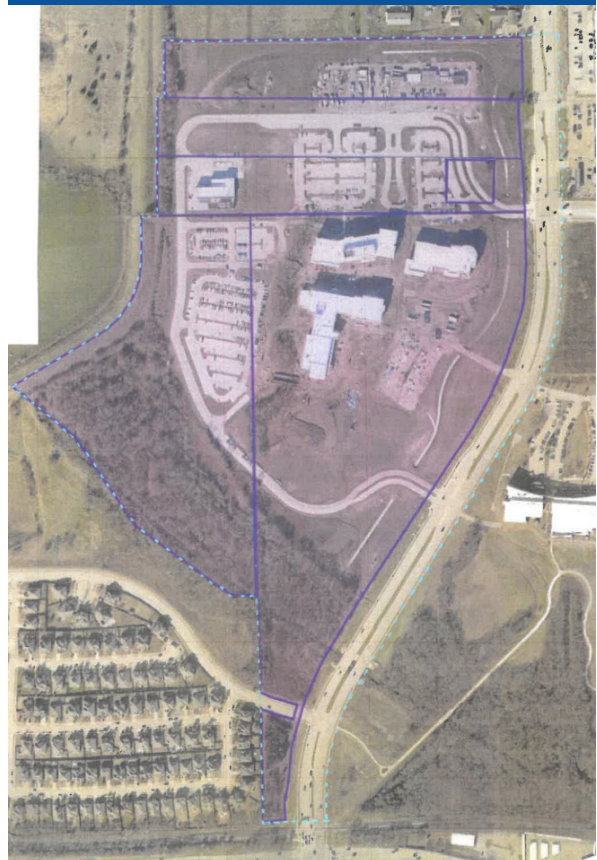
Purple: Collin College Property Border

Blue: Clery Act Reporting Border

### Rockwall Center



### Wylie Campus



### Technical Campus





# Appendix B: Campus Crime Statistics

Celina Campus*									
	On-Campus			Non-Campus			Public Property		
	2022	2023	2024	2022	2023	2024	2022	2023	2024
<b>Criminal Offenses</b>									
Murder and Non-Negligent Manslaughter	0	0	0	0	0	0	0	0	0
Manslaughter by Negligence	0	0	0	0	0	0	0	0	0
Rape	0	0	0	0	0	0	0	0	0
Fondling	0	0	0	0	0	0	0	0	0
Incest	0	0	0	0	0	0	0	0	0
Statutory Rape	0	0	0	0	0	0	0	0	0
Robbery	0	0	0	0	0	0	0	0	0
Aggravated Assault	0	0	0	0	0	0	0	0	0
Burglary	0	0	0	0	0	0	0	0	0
Motor Vehicle Theft	0	0	0	0	0	0	0	0	0
Arson	0	0	0	0	0	0	0	0	0
<b>Arrests</b>									
Weapons: Carrying, Possessing, Etc.	0	0	0	0	0	0	0	0	0
Drug Abuse Violations	0	0	0	0	0	0	0	0	0
Liquor Law Violations	0	0	0	0	0	0	0	0	0
<b>Disciplinary Referrals</b>									
Weapons: Carrying, Possessing, Etc.	0	0	0	0	0	0	0	0	0
Drug Abuse Violations	0	0	0	0	0	0	0	0	0
Liquor Law Violations	0	0	0	0	0	0	0	0	0
<b>VAWA Offenses</b>									
Domestic Violence	0	0	0	0	0	0	0	0	0
Dating Violence	0	0	0	0	0	0	0	0	0
Stalking	0	0	0	0	0	0	0	0	0
<b>Unfounded Crimes</b>									
Total Unfounded Crimes	0	0	0	0	0	0	0	0	0

\* Note: The Celina Campus does not have any residential facilities.

## Hate Crimes:

**2022** - There were no hate crimes at the Celina Campus.

**2023** - There were no hate crimes at the Celina Campus.

**2024** - There were no hate crimes at the Celina Campus.

# Appendix B: Campus Crime Statistics

Collin Higher Education Center*									
	On-Campus			Non-Campus			Public Property		
	2022	2023	2024	2022	2023	2024	2022	2023	2024
<b>Criminal Offenses</b>									
Murder and Non-Negligent Manslaughter	0	0	0	0	0	0	0	0	0
Manslaughter by Negligence	0	0	0	0	0	0	0	0	0
Rape	0	0	0	0	0	0	0	0	0
Fondling	0	0	0	0	0	0	0	0	0
Incest	0	0	0	0	0	0	0	0	0
Statutory Rape	0	0	0	0	0	0	0	0	0
Robbery	0	0	0	0	0	0	0	0	0
Aggravated Assault	0	0	0	0	0	0	0	0	0
Burglary	0	0	0	0	0	0	0	0	0
Motor Vehicle Theft	0	0	0	0	0	0	0	0	0
Arson	0	0	0	0	0	0	0	0	0
<b>Arrests</b>									
Weapons: Carrying, Possessing, Etc.	0	0	0	0	0	0	0	0	0
Drug Abuse Violations	0	0	0	0	0	0	0	0	0
Liquor Law Violations	0	0	0	0	0	0	0	0	0
<b>Disciplinary Referrals</b>									
Weapons: Carrying, Possessing, Etc.	0	0	0	0	0	0	0	0	0
Drug Abuse Violations	0	0	0	0	0	0	0	0	0
Liquor Law Violations	0	0	0	0	0	0	0	0	0
<b>VAWA Offenses</b>									
Domestic Violence	0	0	0	0	0	0	0	0	0
Dating Violence	0	0	0	0	0	0	0	0	0
Stalking	0	1	0	0	0	0	0	0	0
<b>Unfounded Crimes</b>									
Total Unfounded Crimes	0	0	0	0	0	0	0	0	0

\* Note: The Collin Higher Education Center does not have any residential facilities.

## Hate Crimes:

**2022** - There were no hate crimes at the Collin Higher Education Center.

**2023** - There were no hate crimes at the Collin Higher Education Center.

**2024** - There were no hate crimes at the Collin Higher Education Center.

# Appendix B: Campus Crime Statistics

Courtyard Center*									
	On-Campus			Non-Campus			Public Property		
	2022	2023	2024	2022	2023	2024	2022	2023	2024
<b>Criminal Offenses</b>									
Murder and Non-Negligent Manslaughter	0	0	0	0	0	0	0	0	0
Manslaughter by Negligence	0	0	0	0	0	0	0	0	0
Rape	0	0	0	0	0	0	0	0	0
Fondling	0	0	0	0	0	0	0	0	0
Incest	0	0	0	0	0	0	0	0	0
Statutory Rape	0	0	0	0	0	0	0	0	0
Robbery	0	0	0	0	0	0	0	0	0
Aggravated Assault	0	0	0	1	0	0	0	0	0
Burglary	0	0	0	0	0	0	0	0	0
Motor Vehicle Theft	0	0	0	0	0	0	0	0	0
Arson	0	0	0	0	0	0	0	0	0
<b>Arrests</b>									
Weapons: Carrying, Possessing, Etc.	0	0	0	0	0	0	0	0	0
Drug Abuse Violations	0	0	0	0	0	0	0	0	0
Liquor Law Violations	0	0	0	0	0	0	0	0	0
<b>Disciplinary Referrals</b>									
Weapons: Carrying, Possessing, Etc.	0	0	0	0	0	0	0	0	0
Drug Abuse Violations	0	0	0	0	0	0	0	0	0
Liquor Law Violations	0	0	0	0	0	0	0	0	0
<b>VAWA Offenses</b>									
Domestic Violence	0	0	0	0	0	0	0	0	0
Dating Violence	0	0	0	0	0	0	0	0	0
Stalking	0	0	0	0	0	0	0	0	0
<b>Unfounded Crimes</b>									
Total Unfounded Crimes	0	0	0	0	0	0	0	0	0

\* Note: The Courtyard Center does not have any residential facilities.

## Hate Crimes:

**2022** - There were no hate crimes at the Courtyard Center.

**2023** - There were no hate crimes at the Courtyard Center.

**2024** - There were no hate crimes at the Courtyard Center.



# Appendix B: Campus Crime Statistics

Farmersville Campus*+									
	On-Campus			Non-Campus			Public Property		
	2022	2023	2024	2022	2023	2024	2022	2023	2024
<b>Criminal Offenses</b>									
Murder and Non-Negligent Manslaughter	0	0	0	0	0	0	0	0	0
Manslaughter by Negligence	0	0	0	0	0	0	0	0	0
Rape	0	0	0	0	0	0	0	0	0
Fondling	0	0	0	0	0	0	0	0	0
Incest	0	0	0	0	0	0	0	0	0
Statutory Rape	0	0	0	0	0	0	0	0	0
Robbery	0	0	0	0	0	0	0	0	0
Aggravated Assault	0	0	0	0	0	0	0	0	0
Burglary	0	0	0	0	0	0	0	0	0
Motor Vehicle Theft	0	0	0	0	0	0	0	0	0
Arson	0	0	0	0	0	0	0	0	0
<b>Arrests</b>									
Weapons: Carrying, Possessing, Etc.	0	0	0	0	0	0	0	0	0
Drug Abuse Violations	0	0	0	0	0	0	0	0	0
Liquor Law Violations	0	0	0	0	0	0	0	0	0
<b>Disciplinary Referrals</b>									
Weapons: Carrying, Possessing, Etc.	0	0	0	0	0	0	0	0	0
Drug Abuse Violations	0	1	0	0	0	0	0	0	0
Liquor Law Violations	0	0	0	0	0	0	0	0	0
<b>VAWA Offenses</b>									
Domestic Violence	1	0	0	0	0	0	0	0	0
Dating Violence	1	0	0	1	0	0	0	0	0
Stalking	1	0	0	1	0	0	0	0	0
<b>Unfounded Crimes</b>									
Total Unfounded Crimes	0	0	0	0	0	0	0	0	0

\* Note: The Farmersville Campus does not have any residential facilities.

## Hate Crimes:

**2022** - There were no hate crimes at the Farmersville Campus.

**2023** - There were no hate crimes at the Farmersville Campus.

**2024** - There were no hate crimes at the Farmersville Campus.

# Appendix B: Campus Crime Statistics

Frisco Campus*									
	On-Campus			Non-Campus			Public Property		
	2022	2023	2024	2022	2023	2024	2022	2023	2024
<b>Criminal Offenses</b>									
Murder and Non-Negligent Manslaughter	0	0	0	0	0	0	0	0	0
Manslaughter by Negligence	0	0	0	0	0	0	0	0	0
Rape	0	0	0	0	0	0	0	0	0
Fondling	0	0	2	1	0	0	0	0	0
Incest	0	0	0	0	0	0	0	0	0
Statutory Rape	0	0	0	0	0	0	0	0	0
Robbery	0	0	0	0	0	0	0	0	0
Aggravated Assault	0	1	0	0	0	0	0	0	0
Burglary	0	0	0	0	0	0	0	0	0
Motor Vehicle Theft	0	0	0	0	0	0	0	0	0
Arson	0	0	0	0	0	0	0	0	0
<b>Arrests</b>									
Weapons: Carrying, Possessing, Etc.	0	0	1	0	0	0	0	0	0
Drug Abuse Violations	0	0	0	0	0	0	0	0	0
Liquor Law Violations	0	0	0	1	0	0	0	0	0
<b>Disciplinary Referrals</b>									
Weapons: Carrying, Possessing, Etc.	1	0	0	0	0	0	0	0	0
Drug Abuse Violations	1	0	0	0	0	0	0	0	0
Liquor Law Violations	0	0	0	0	0	0	0	0	0
<b>VAWA Offenses</b>									
Domestic Violence	0	0	0	0	0	0	0	0	0
Dating Violence	0	1	0	0	0	0	0	0	0
Stalking	1	4	3	0	0	0	0	0	0
<b>Unfounded Crimes</b>									
Total Unfounded Crimes	0	0	0	0	0	0	0	0	0

\* Note: The Frisco Campus does not have any residential facilities.

## Hate Crimes:

**2022** - There were no hate crimes at the Frisco Campus.

**2023** - One (1) On-Campus Destruction/Damage/Vandalism of Property incident characterized by Gender Identity bias and Sexual Orientation bias.

**2024** - There were no hate crimes at the Frisco Campus.

# Appendix B: Campus Crime Statistics

McKinney Campus*									
	On-Campus			Non-Campus			Public Property		
	2022	2023	2024	2022	2023	2024	2022	2023	2024
<b>Criminal Offenses</b>									
Murder and Non-Negligent Manslaughter	0	0	0	0	0	0	0	0	0
Manslaughter by Negligence	0	0	0	0	0	0	0	0	0
Rape	0	0	0	0	0	0	0	0	0
Fondling	1	0	0	0	0	0	0	0	0
Incest	0	0	0	0	0	0	0	0	0
Statutory Rape	0	0	0	0	0	0	0	0	0
Robbery	0	0	0	0	0	0	0	0	0
Aggravated Assault	0	0	0	0	0	0	0	0	0
Burglary	0	0	1	0	0	0	0	0	0
Motor Vehicle Theft	0	0	0	0	0	0	0	0	0
Arson	0	0	0	0	0	0	0	0	0
<b>Arrests</b>									
Weapons: Carrying, Possessing, Etc.	0	0	0	0	0	0	0	0	0
Drug Abuse Violations	0	0	0	0	0	0	0	0	0
Liquor Law Violations	0	0	0	0	0	0	0	0	0
<b>Disciplinary Referrals</b>									
Weapons: Carrying, Possessing, Etc.	0	2	0	0	0	0	0	0	0
Drug Abuse Violations	0	0	2	0	0	0	0	0	0
Liquor Law Violations	0	0	0	0	0	0	0	0	0
<b>VAWA Offenses</b>									
Domestic Violence	0	0	0	0	0	0	0	0	0
Dating Violence	0	0	0	0	0	0	0	0	0
Stalking	1	4	1	1	0	0	0	0	0
<b>Unfounded Crimes</b>									
Total Unfounded Crimes	0	0	0	0	0	0	0	0	0

\* Note: The McKinney Campus does not have any residential facilities.

## Hate Crimes:

**2022** - There were no hate crimes at the McKinney Campus.

**2023** - There were no hate crimes at the McKinney Campus.

**2024** - There were no hate crimes at the McKinney Campus.



# Appendix B: Campus Crime Statistics

Plano Campus												
	On-Campus			Non-Campus			Public Property			Residential Facilities		
	2022	2023	2024	2022	2023	2024	2022	2023	2024	2022	2023	2024
<b>Criminal Offenses</b>												
Murder and Non-Negligent Manslaughter	0	0	0	0	0	0	0	0	0	0	0	0
Manslaughter by Negligence	0	0	0	0	0	0	0	0	0	0	0	0
Rape	2	6	4	0	0	0	0	0	0	2	3	3
Sexual Assault	1	0	1	0	0	0	0	0	0	1	0	1
Sexual Offense	0	0	0	0	0	0	0	0	0	0	0	0
Statutory Rape	0	0	0	0	0	0	0	0	0	0	0	0
Robbery	0	0	0	0	0	0	0	0	0	0	0	0
Aggravated Assault	0	0	0	0	0	0	0	0	0	0	0	0
Burglary	3	2	1	0	0	0	0	0	0	2	2	1
Motor Vehicle Theft	0	0	0	0	0	0	0	0	0	0	0	0
Arson	0	0	0	0	0	0	0	0	0	0	0	0
<b>Arrests</b>												
Weapons: Carrying, Possessing, Etc.	0	0	1	0	0	0	0	0	0	0	0	1
Drug Abuse Violations	0	0	1	0	0	0	0	0	0	0	0	0
Liquor Law Violations	0	0	0	0	0	0	0	0	0	0	0	0
<b>Disciplinary Referrals</b>												
Weapons: Carrying, Possessing, Etc.	0	1	1	0	0	0	0	0	0	0	0	0
Drug Abuse Violations	7	1	0	0	0	0	0	0	0	5	1	0
Liquor Law Violations	0	1	0	0	0	0	0	0	0	0	1	0
<b>VAWA Offenses</b>												
Domestic Violence	1	2	0	0	0	0	0	0	0	0	2	0
Dating Violence	4	1	1	0	0	0	0	0	0	1	1	1
Stalking	7	5	5	0	0	0	0	0	0	1	1	0
<b>Unfounded Crimes</b>												
Total Unfounded Crimes	0	0	0	0	0	0	0	0	0	0	0	0

**\*\*Note:** Two corrections were made to the 2024 ASR data in Appendix B, previously published crime statistics in accordance with the U.S. Department of Education's Federal School Safety Survey, which was released after prior editions of the ASFSR. These corrections reflect the Clery Act requirement that all crimes occurring in on-campus student housing must also be reported under the on-campus category. The corrections ensure the accuracy and integrity of this report.\*\*

## Hate Crimes:

**2022** - One (1) On-Campus Destruction/Damage/Vandalism of Property incident characterized by Gender bias and Sexual Orientation bias

**2023** - There were no hate crimes at the Plano Campus.

**2024** - There were no hate crimes at the Plano Campus.

# Appendix B: Campus Crime Statistics

Public Safety Training Center*									
	On-Campus			Non-Campus			Public Property		
	2022	2023	2024	2022	2023	2024	2022	2023	2024
<b>Criminal Offenses</b>									
Murder and Non-Negligent Manslaughter	0	0	0	0	0	0	0	0	0
Manslaughter by Negligence	0	0	0	0	0	0	0	0	0
Rape	0	0	0	0	0	0	0	0	0
Fondling	0	0	0	0	0	0	0	0	0
Incest	0	0	0	0	0	0	0	0	0
Statutory Rape	0	0	0	0	0	0	0	0	0
Robbery	0	0	0	0	0	0	0	0	0
Aggravated Assault	0	0	0	0	0	0	0	0	0
Burglary	0	0	0	0	0	0	0	0	0
Motor Vehicle Theft	0	0	0	0	0	0	0	0	0
Arson	0	0	0	0	0	0	0	0	0
<b>Arrests</b>									
Weapons: Carrying, Possessing, Etc.	0	0	0	0	0	0	0	0	0
Drug Abuse Violations	0	0	0	0	0	0	0	0	0
Liquor Law Violations	0	0	0	0	0	0	0	0	0
<b>Disciplinary Referrals</b>									
Weapons: Carrying, Possessing, Etc.	0	0	0	0	0	0	0	0	0
Drug Abuse Violations	0	0	0	0	0	0	0	0	0
Liquor Law Violations	0	0	0	0	0	0	0	0	0
<b>VAWA Offenses</b>									
Domestic Violence	0	0	0	0	0	0	0	0	0
Dating Violence	0	0	0	0	0	0	0	0	0
Stalking	0	0	0	0	0	0	0	0	0
<b>Unfounded Crimes</b>									
Total Unfounded Crimes	0	0	0	0	0	0	0	0	0

\* Note: The Public Safety Training Center does not have any residential facilities.

## Hate Crimes:

**2022** – There were no hate crimes at the Public Safety Training Center.

**2023** – There were no hate crimes at the Public Safety Training Center.

**2024** – There were no hate crimes at the Public Safety Training Center.

# Appendix B: Campus Crime Statistics

Rockwall Center*+									
	On-Campus			Non-Campus			Public Property		
	2022	2023	2024	2022	2023	2024	2022	2023	2024
<b>Criminal Offenses</b>									
Murder and Non-Negligent Manslaughter	0	0	0	0	0	0	0	0	0
Manslaughter by Negligence	0	0	0	0	0	0	0	0	0
Rape	0	0	0	0	0	0	0	0	0
Fondling	0	0	0	0	0	0	0	0	0
Incest	0	0	0	0	0	0	0	0	0
Statutory Rape	0	0	0	0	0	0	0	0	0
Robbery	0	0	0	0	0	0	0	0	0
Aggravated Assault	0	0	0	0	0	0	1	0	0
Burglary	0	0	0	0	0	0	0	0	0
Motor Vehicle Theft	0	0	0	0	0	0	0	0	0
Arson	0	0	0	0	0	0	0	0	0
<b>Arrests</b>									
Weapons: Carrying, Possessing, Etc.	0	0	0	0	0	0	0	0	0
Drug Abuse Violations	0	0	0	0	0	0	0	0	0
Liquor Law Violations	0	0	0	0	0	0	0	0	0
<b>Disciplinary Referrals</b>									
Weapons: Carrying, Possessing, Etc.	0	0	0	0	0	0	1	0	0
Drug Abuse Violations	0	0	0	0	0	0	2	0	0
Liquor Law Violations	0	0	0	0	0	0	0	0	0
<b>VAWA Offenses</b>									
Domestic Violence	0	0	0	0	0	0	0	0	0
Dating Violence	0	0	0	0	0	0	0	0	0
Stalking	0	0	0	0	0	0	0	0	0
<b>Unfounded Crimes</b>									
Total Unfounded Crimes	0	0	0	0	0	0	0	0	0

\* Note: The Rockwall Campus does not have any residential facilities.

+ Note: Collin College ended its operations at the Rockwall Center on May 21, 2024.

## Hate Crimes:

**2022** - There were no hate crimes at the Rockwall Center.

**2023** - There were no hate crimes at the Rockwall Center.

**2024** - There were no hate crimes at the Rockwall Center.



# Appendix B: Campus Crime Statistics

Technical Campus*									
	On-Campus			Non-Campus			Public Property		
	2022	2023	2024	2022	2023	2024	2022	2023	2024
<b>Criminal Offenses</b>									
Murder and Non-Negligent Manslaughter	0	0	0	0	0	0	0	0	0
Manslaughter by Negligence	0	0	0	0	0	0	0	0	0
Rape	0	0	0	0	0	0	0	0	0
Fondling	0	0	1	0	0	0	0	0	0
Incest	0	0	0	0	0	0	0	0	0
Statutory Rape	0	0	0	0	0	0	0	0	0
Robbery	0	0	0	0	0	0	0	0	0
Aggravated Assault	0	0	0	0	0	0	0	0	0
Burglary	0	0	0	0	0	0	0	0	0
Motor Vehicle Theft	0	0	0	0	0	0	0	0	0
Arson	0	0	0	0	0	0	0	0	0
<b>Arrests</b>									
Weapons: Carrying, Possessing, Etc.	0	0	0	0	0	0	0	0	0
Drug Abuse Violations	0	0	0	0	0	0	0	0	0
Liquor Law Violations	0	0	0	0	0	0	0	0	0
<b>Disciplinary Referrals</b>									
Weapons: Carrying, Possessing, Etc.	0	0	0	0	0	0	0	0	0
Drug Abuse Violations	0	0	0	0	0	0	0	0	0
Liquor Law Violations	0	0	0	0	0	0	0	0	0
<b>VAWA Offenses</b>									
Domestic Violence	0	0	0	0	0	0	0	0	0
Dating Violence	0	0	0	0	0	0	0	0	0
Stalking	1	0	1	0	0	1	0	0	0
<b>Unfounded Crimes</b>									
Total Unfounded Crimes	0	0	0	0	0	0	0	0	0

\* Note: The Technical Campus does not have any residential facilities.

## Hate Crimes:

**2022** - There were no hate crimes at the Technical Campus.

**2023** - There were no hate crimes at the Technical Campus.

**2024** - There were no hate crimes at the Technical Campus.

# Appendix B: Campus Crime Statistics

Wylie Campus									
	On-Campus			Non-Campus			Public Property		
	2022	2023	2024	2022	2023	2024	2022	2023	2024
<b>Criminal Offenses</b>									
Murder and Non-Negligent Manslaughter	0	0	0	0	0	0	0	0	0
Manslaughter by Negligence	0	0	0	0	0	0	0	0	0
Rape	0	0	0	0	0	0	0	0	0
Fondling	0	0	0	0	0	0	0	0	0
Incest	0	0	0	0	0	0	0	0	0
Statutory Rape	0	0	0	0	0	0	0	0	0
Robbery	0	0	0	0	0	0	0	0	0
Aggravated Assault	0	0	0	0	0	0	0	0	0
Burglary	0	1	0	0	0	0	0	0	0
Motor Vehicle Theft	0	0	0	0	0	0	0	0	0
Arson	0	0	0	0	0	0	0	0	0
<b>Arrests</b>									
Weapons: Carrying, Possessing, Etc.	0	0	0	0	0	0	0	0	0
Drug Abuse Violations	0	0	0	0	0	0	0	0	0
Liquor Law Violations	0	0	0	0	0	0	0	0	0
<b>Disciplinary Referrals</b>									
Weapons: Carrying, Possessing, Etc.	0	0	0	0	0	0	0	0	0
Drug Abuse Violations	0	0	0	0	0	0	0	0	0
Liquor Law Violations	0	0	0	0	0	0	0	0	0
<b>VAWA Offenses</b>									
Domestic Violence	0	0	0	0	0	0	0	0	0
Dating Violence	0	2	0	0	0	0	0	0	0
Stalking	1	1	1	0	0	0	0	0	0
<b>Unfounded Crimes</b>									
Total Unfounded Crimes	0	0	0	0	0	0	0	0	0

\* Note: The Wylie Campus does not have any residential facilities.

## Hate Crimes:

**2022** - There were no hate crimes at the Wylie Campus.

**2023** - There were no hate crimes at the Wylie Campus.

**2024** - There were no hate crimes at the Wylie Campus.

# Appendix C: Fire Statistics

Fire Statistics																
Residential Facility	Total Number of Fires Cause of Fire			Cause of Fire			Number of Injuries Requiring Treatment at a Medical Facility			Number of Fire Related Deaths			Value of Property Damage Caused by Fire			
	2022	2023	2024	2022	2023	2024	2022	2023	2024	2022	2023	2024	2022	2023	2024	
Collin College Student Housing 5800 Jupiter Road Plano, Texas 75074	0	0	0	N/A	N/A	N/A	0	0	0	0	0	0	\$0.00	\$0.00	\$0.00	
Fire Drills																
Residential Facility	Spring 2024 (2)						Fall 2024 (2)									
	Announced			Unannounced			Announced					Unannounced				
Collin College Student Housing 5800 Jupiter Road Plano, Texas 75074	February 8th @ 11:00AM			March 21st @ 5:00PM			September 5th @ 11:00AM					October 15th @ 5:00PM				